

## NOISE ABATEMENT PROCEDURES

1) Departure tracks include Noise Abatement Routing.

## INITIAL CLIMB PROCEDURE RWY 25

**Warning:** “Close in “ obstacles penetrating OIS 2.5% exist, but they were not considered for the published procedure design gradient  
**Remarks**

1. Minimum suggested climb gradient: 425 ft/NM (7%) until passing 500 ft.
2. Non RNAV1 equipped aircraft shall inform Fiumicino TWR at start-up.

## XIBRI 5A

Path Terminator	Waypoint Identifier	Fly Over	Course °M (°T)	Magnetic Variation	Distance (NM)	Turn Direction	Altitude (Ft)	Speed Limit (Kt)	Navigation Specification
CA	-	-	247° (249.7°)	3°	-	-	+410	-	RNAV1
CF	RF777	-	247° (249.7°)	3°	-	-	-	200	RNAV1
TF	RF786	-	217° (220.0°)	-	3.0	-	-	200	RNAV1
TF	XIBRI	-	175° (178.0°)	-	11.8	-	+3000	-	RNAV1

## SOSAK 5A

Path Terminator	Waypoint Identifier	Fly Over	Course °M (°T)	Magnetic Variation	Distance (NM)	Turn Direction	Altitude (Ft)	Speed Limit (Kt)	Navigation Specification
CA	-	-	247° (249.7°)	3°	-	-	+410	-	RNAV1
CF	RF777	-	247° (249.7°)	3°	-	-	-	200	RNAV1
TF	RF787	-	265° (268.0°)	-	2.7	-	-	200	RNAV1
TF	RF789	-	220° (222.9°)	-	7.1	-	-	200	RNAV1
TF	SOSAK	-	177° (180.0°)	-	5.1	-	+3000	-	RNAV1

## XENOL 5A

Path Terminator	Waypoint Identifier	Fly Over	Course °M (°T)	Magnetic Variation	Distance (NM)	Turn Direction	Altitude (Ft)	Speed Limit (Kt)	Navigation Specification
CA	-	-	247° (249.7°)	3°	-	-	+410	-	RNAV1
CF	RF777	-	247° (249.7°)	3°	-	-	-	200	RNAV1
TF	RF791	-	265° (267.9°)	-	5.0	-	-	-	RNAV1
TF	RF788	-	267° (269.7°)	-	11.6	-	-	-	RNAV1
TF	XENOL	-	267° (269.5°)	-	13.0	-	+4000	-	RNAV1

**NENIG 5A**

Path Terminator	Waypoint Identifier	Fly Over	Course °M (°T)	Magnetic Variation	Distance (NM)	Turn Direction	Altitude (Ft)	Speed Limit (Kt)	Navigation Specification
CA	-	-	247° (249.7°)	3°	-	-	+410	-	RNAV1
CF	RF777	-	247° (249.7°)	3°	-	-	-	200	RNAV1
TF	RF791	-	265° (267.9°)	-	5.0	-	-	-	RNAV1
TF	RF788	-	267° (269.7°)	-	11.6	-	-	-	RNAV1
TF	NENIG	-	298° (300.6°)	-	13.0	-	+4000	-	RNAV1

**SOSIV 5A**

Path Terminator	Waypoint Identifier	Fly Over	Course °M (°T)	Magnetic Variation	Distance (NM)	Turn Direction	Altitude (Ft)	Speed Limit (Kt)	Navigation Specification
CA	-	-	247° (249.7°)	3°	-	-	+410	-	RNAV1
CF	RF792	-	247° (249.7°)	3°	-	-	-	200	RNAV1
TF	RF706	-	305° (308.2°)	-	5.2	-	+3000	200	RNAV1
TF	RF707	-	341° (344.4°)	-	7.1	-	+6000	-	RNAV1
TF	RF708	-	353° (355.8°)	-	7.3	-	+FL110	-	RNAV1
TF	SOSIV	-	353° (355.8°)	-	6.3	-	-	-	RNAV1

**SOSAK 5D (ATC DISCRETION)**

Path Terminator	Waypoint Identifier	Fly Over	Course °M (°T)	Magnetic Variation	Distance (NM)	Turn Direction	Altitude (Ft)	Speed Limit (Kt)	Navigation Specification
CA	-	-	247° (249.7°)	3°	-	-	+410	-	RNAV1
CF	RF777	-	247° (249.7°)	3°	-	-	-	200	RNAV1
TF	RF786	-	217° (220.0°)	-	3.0	-	-	200	RNAV1
TF	SOSAK	-	212° (214.6°)	-	9.8	-	+3000	-	RNAV1

**SOSIV 6R (ATC DISCRETION)**

Path Terminator	Waypoint Identifier	Fly Over	Course °M (°T)	Magnetic Variation	Distance (NM)	Turn Direction	Altitude (Ft)	Speed Limit (Kt)	Navigation Specification
CA	-	-	247° (249.7°)	3°	-	-	+410	-	RNAV1
CF	RF792	-	247° (249.7°)	3°	-	-	-	200	RNAV1
TF	RF706	-	305° (308.2°)	-	5.2	-	+3000	200	RNAV1
TF	RF711	-	274° (276.4°)	-	13.1	-	+6000	-	RNAV1
TF	RF712	-	025° (028.0°)	-	15.2	-	+FL110	-	RNAV1
TF	SOSIV	-	025° (028.0°)	-	6.3	-	-	-	RNAV1

**WAYPOINT LIST**

<b>Waypoint Identifier</b>	<b>Coordinates</b>
RF706	41°50'34.9"N 012°06'13.6"E
RF707	41°57'25.4"N 012°03'40.6"E
RF708	42°04'42.2"N 012°02'57.8"E
RF711	41°52'03.4"N 011°48'47.6"E
RF712	42°05'26.0"N 011°58'21.1"E
RF777	41°47'36.1"N 012°12'38.0"E
RF788	41°47'23.1"N 011°50'30.7"E
RF791	41°47'25.4"N 012°05'57.2"E
RF792	41°47'20.8"N 012°11'42.8"E
RF786	41°45'18.1"N 012°10'03.5"E
RF787	41°47'30.5"N 012°09'05.6"E
RF789	41°42'18.8"N 012°02'38.0"E

Intenzionalmente bianca

*Intentionally left blank*

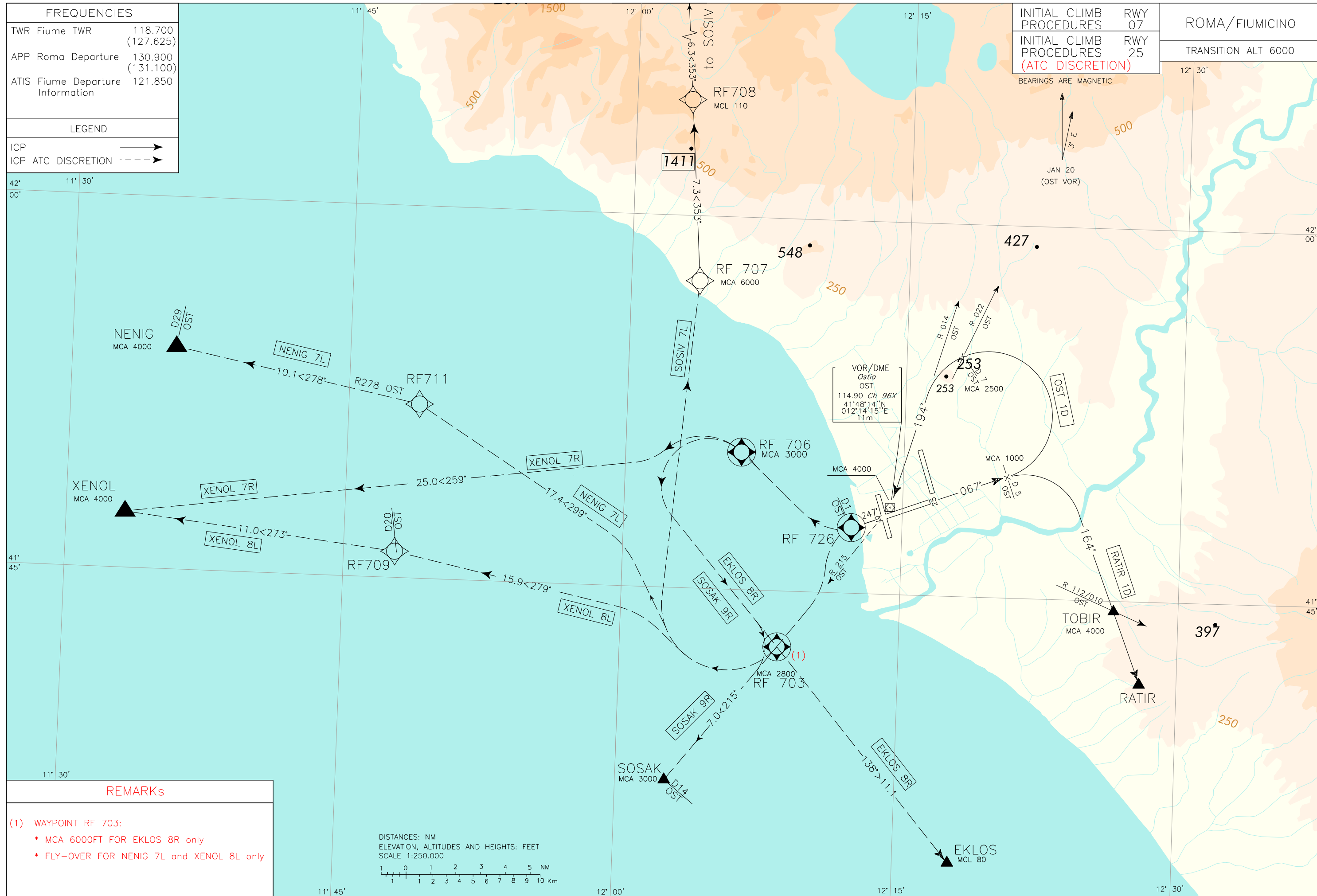
FREQUENCIES	
TWR Fiume TWR	118.700 (127.625)
APP Roma Departure	130.900 (131.100)
ATIS Fiume Departure Information	121.850

LEGEND	
ICP	→
ICP ATC DISCRETION	- - - →

INITIAL CLIMB PROCEDURES	RWY	ROMA/FIUMICINO
	07	
	25	
INITIAL CLIMB PROCEDURES (ATC DISCRETION)		TRANSITION ALT 6000

CHANGE: ICP RWY07 RENAMED



**REMARKS**

(1) WAYPOINT RF 703:  
 \* MCA 6000FT FOR EKLOS 8R only  
 \* FLY-OVER FOR NENIG 7L and XENOL 8L only

## NOISE ABATEMENT PROCEDURES

Departure tracks include Noise Abatement Routing.

### INITIAL CLIMB PROCEDURE RWY 25 (ATC DISCRETION)

- **Warning:** “Close in “ obstacles penetrating OIS 2.5% exist, but they were not considered for the published procedure design gradient

#### Remarks

1. Minimum suggested climb gradient: 410 ft/NM until passing 500 ft.
2. Non RNAV1 equipped aircraft shall inform Fiumicino TWR at start-up. During independent parallel approaches they will expect :
  - a. In case of RWY 16 in use : initial clearance via NENIG (RDL 278 OST VOR) and then rerouted, according to traffic situation, through radar vectoring bound to the planned exit point.
  - b. In case of RWY 34 in use: initial clearance via SOSAK (RDL 215 OST VOR) and then rerouted, according to traffic situation, through radar vectoring bound to the planned exit point.

#### EKLOS 8R (ATC discretion)

Path Terminator	Waypoint Identifier	Fly Over	Course °M(°T)	Magnetic Variation	Distance (NM)	Turn Direction	Altitude (ft)	Speed Limit (kt)	Navigation Specification
CA	-	-	247 (249.7)	-	-	-	+410	-	RNAV1
CF	RF726	Y	247 (249.7)	3	-	-	-	-210	RNAV1
DF	RF706	Y	-	-	-	-	+3000	-230	RNAV1
DF	RF703	-	-	-	-	-	+6000	-	RNAV1
TF	EKLOS	-	138 (140.9)	-	11.1	-	+FL80	-	RNAV1

#### NENIG 7L (ATC discretion)

Path Terminator	Waypoint Identifier	Fly Over	Course °M(°T)	Magnetic Variation	Distance (NM)	Turn Direction	Altitude (ft)	Speed Limit (kt)	Navigation Specification
CA	-	-	247 (249.7)	-	-	-	+410	-	RNAV1
CF	RF726	Y	247 (249.7)	3	-	-	-	-210	RNAV1
DF	RF703	Y	-	-	-	-	+2800	-	RNAV1
TF	RF711	-	299 (302.1)	-	17.4	-	-	-	RNAV1
TF	NENIG	-	278 (281.1)	-	10.1	-	+4000	-	RNAV1

**SOSAK 9R (ATC Discretion)**

Path Terminator	Waypoint Identifier	Fly Over	Course °M(°T)	Magnetic Variation	Distance (NM)	Turn Direction	Altitude (ft)	Speed Limit (kt)	Navigation Specification
CA	-	-	247 (249.7)	-	-	-	+410	-	RNAV1
CF	RF726	Y	247 (249.7)	3	-	-	-	-210	RNAV1
DF	RF706	Y	-	-	-	-	+3000	-230	RNAV1
DF	RF703	-	-	-	-	-	-	-	RNAV1
TF	SOSAK	-	215 (218.3)	-	7.0	-	-	-	RNAV1

**SOSIV 7L (ATC Discretion)**

Path Terminator	Waypoint Identifier	Fly Over	Course °M(°T)	Magnetic Variation	Distance (NM)	Turn Direction	Altitude (ft)	Speed Limit (kt)	Navigation Specification
CA	-	-	247 (249.7)	-	-	-	+410	-	RNAV1
CF	RF726	Y	247 (249.7)	3	-	-	-	-210	RNAV1
DF	RF703	-	-	-	-	-	+2800	-	RNAV1
DF	RF707	-	-	-	-	-	+6000	-	RNAV1
TF	RF708	-	353 (355.8)	-	7.3	-	+FL110	-	RNAV1
TF	SOSIV	-	353 (355.8)	-	6.3	-	-	-	RNAV1

**XENOL 8L (ATC Discretion)**

Path Terminator	Waypoint Identifier	Fly Over	Course °M(°T)	Magnetic Variation	Distance (NM)	Turn Direction	Altitude (ft)	Speed Limit (kt)	Navigation Specification
CA	-	-	247 (249.7)	-	-	-	+410	-	RNAV1
CF	RF726	Y	247 (249.7)	3	-	-	-	-210	RNAV1
DF	RF703	Y	-	-	-	-	+2800	-	RNAV1
TF	RF709	-	279 (281.9)	-	15.9	-	-	-	RNAV1
TF	XENOL	-	273 (276.2)	-	11.0	-	+4000	-	RNAV1

**XENOL 7R (ATC Discretion)**

Path Terminator	Waypoint Identifier	Fly Over	Course °M(°T)	Magnetic Variation	Distance (NM)	Turn Direction	Altitude (ft)	Speed Limit (kt)	Navigation Specification
CA	-	-	247 (249.7)	-	-	-	+410	-	RNAV1
CF	RF726	Y	247 (249.7)	3	-	-	-	-210	RNAV1
DF	RF706	Y	-	-	-	-	+3000	-	RNAV1
TF	XENOL	-	259 (262.3)	-	25.0	-	+4000	-	RNAV1



**WAYPOINT LIST**

<b>Waypoint Identifier</b>	<b>Coordinates</b>
RF702	41°49'49.0"N 012°03'46.1"E
RF703	41°42'47.4"N 012°08'28.4"E
RF706	41°50'34.9"N 012°06'13.6"E
RF707	41°57'25.4"N 012°03'40.6"E
RF708	42°04'42.2"N 012°02'57.8"E
RF709	41°46'05.8"N 011°47'44.5"E
RF711	41°52'03.4"N 011°48'47.6"E
RF712	42°05'26.0"N 011°58'21.1"E
RF713	41°39'45.4"N 012°12'09.9"E
RF726	41°47'43.7"N 012°13'05.6"E

**INITIAL CLIMB PROCEDURE RWY 07****REMARKS**

- 1) In order to reduce the noise over surrounding settlements, pilots shall comply with the above MCA and, when RWY 07 is used, shall contain turns within 8 NM OST DME.
- 2) Pilots shall adopt a minimum climb gradient in accordance with ICAO-Annex 6 provisions for a safe obstacles overflying. Such climb gradient shall be maintained in any foreseeable circumstance.

After take-off climb on TR 067° to cross 5 NM OST DME at 1000 ft or above, then:

- a) OST 1D: Turn left to intercept and follow RDL 014 OST VOR bound to OST VOR and then expect ATC instruction.

MCA: INT RDL 022/7NM OST VOR/DME 2500FT; OST VOR 4000FT

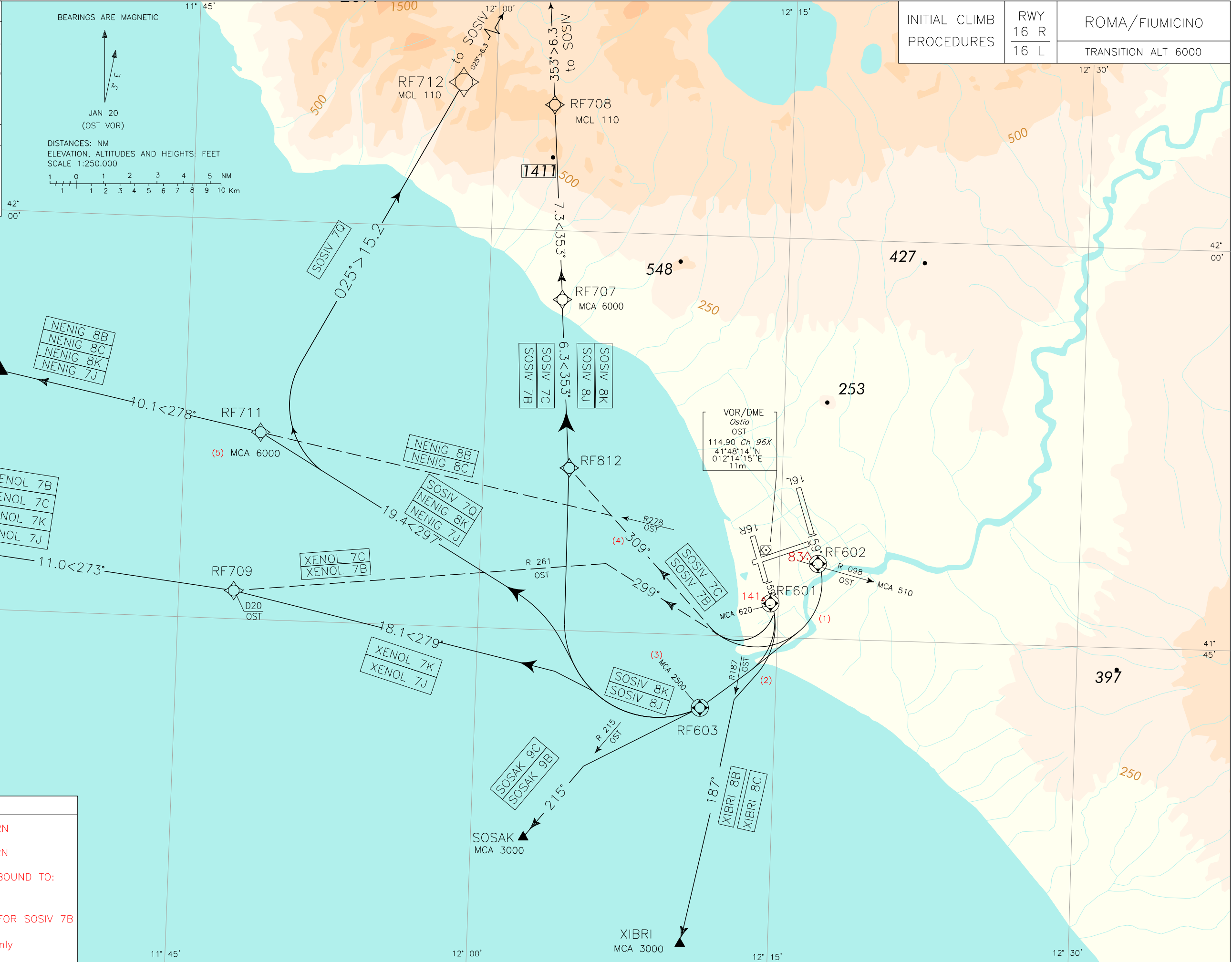
- b) RATIR 1D: Turn right to RATIR, then proceed according to ATC detailed clearance.

MCA: TOBIR (RDL 112/10NM OST VOR/DME): 4000 FT

FREQUENCIES	
TWR Fiume TWR	118.700 (127.625)
APP Roma Departure	130.900 (131.100)
ATIS Fiume Departure Information	121.850

LEGEND	
ICP	→
ICP ATC DISCRETION	- - - - - →



INITIAL CLIMB PROCEDURES	RWY 16 R	ROMA/FIUMICINO
	16 L	

CHANGE: MAGNETIC DECLINATION UPDATED

- REMARKS**
- (1) IAS MAX 210 KT DURING TURN
  - (2) IAS MAX 220 KT DURING TURN
  - (3) MCA 2500FT ONLY FOR ICP BOUND TO:  
NENIG - SOSIV - XENOL
  - (4) TR 309° INDICATION EXCEPT FOR SOSIV 7B
  - (5) MCA 6000FT for SOSIV 7Q only

**NOISE ABATEMENT PROCEDURES**

- a) RWY 16R (159°) – Apply noise abatement technique.
- b) RWY 16L (159°) – Apply noise abatement technique.
- c) Non RNAV1 equipped aircraft shall inform Fiumicino TWR at start-up.
- d) During independent parallel approaches for RWY 16L/R non RNAV1 aircraft planning via via XENOL – NENIG will be initially cleared via SOSAK departure (RDL 215 OST VOR) and then rerouted, according to traffic situation, through radar vectoring bound to the planned exit point.
- e) Pilots shall adopt a minimum climb gradient in accordance with ICAO-Annex 6 provisions for a safe obstacles overflying. Such climb gradient shall be maintained in any foreseeable circumstance.

**INITIAL CLIMB PROCEDURE RWY 16R****NENIG 8B (ATC discretion)**

After take-off maintain RWY heading until 2 NM OST DME (MCA 620ft) then turn right (IAS MAX 220 kt) on TR309° to join RDL 278 OST VOR bound to NENIG.

MCA: D2 OST DME: 620FT; NENIG: 4000FT

**NENIG 8K**

Path Terminator	Waypoint Identifier	Fly Over	Course °M(°T)	Magnetic Variation	Distance (NM)	Turn Direction	Altitude (ft)	Speed Limit (kt)	Navigation Specification
CA	-	-	159 (162.6)	-	-	-	+410	-	RNAV1
CF	RF601	Y	159 (162.6)	3	-	-	+620	-220	RNAV1
DF	RF603	Y	-	-	-	-	+2500	-	RNAV1
TF	RF711	-	297 (300.2)	-	19.4	-	-	-	RNAV1
TF	NENIG	-	278 (281.1)	-	10.1	-	+4000	-	RNAV1

**SOSAK 9B**

After take-off maintain RWY heading until 2 NM OST DME (MCA 620ft) then turn right (IAS MAX 220 kt) to join RDL 215 OST VOR bound to SOSAK.

MCA: RF601: 620FT; SOSAK: 3000FT

Path Terminator	Waypoint Identifier	Fly Over	Course °M(°T)	Magnetic Variation	Distance (NM)	Turn Direction	Altitude (ft)	Speed Limit (kt)	Navigation Specification
CA	-	-	159 (162.6)	-	-	-	+410	-	Conventional/RNAV1
CF	RF601	Y	159 (162.6)	3	-	-	+620	-220	Conventional/RNAV1
DF	RF603	Y	-	-	-	-	-	-	Conventional/RNAV1
CF	SOSAK	-	215 (218.4)	-	-	-	+3000	-	Conventional/RNAV1

**SOSIV 7B (ATC DISCRETION)**

Path Terminator	Waypoint Identifier	Fly Over	Course °M(°T)	Magnetic Variation	Distance (NM)	Turn Direction	Altitude (ft)	Speed Limit (kt)	Navigation Specification
CA	-	-	159 (162.6)	-	-	-	+410	-	RNAV1
CF	RF601	Y	159 (162.6)	3	-	-	+620	-220	RNAV1
DF	RF812	-	-	-	-	-	-	-	RNAV1
TF	RF707	-	353 (355.8)	-	6.3	-	+6000	-	RNAV1
TF	RF708	-	353 (355.8)	-	7.3	-	+FL110	-	RNAV1
TF	SOSIV	-	353 (355.8)	-	6.3	-	-	-	RNAV1

**SOSIV 8K**

Path Terminator	Waypoint Identifier	Fly Over	Course °M(°T)	Magnetic Variation	Distance (NM)	Turn Direction	Altitude (ft)	Speed Limit (kt)	Navigation Specification
CA	-	-	159 (162.6)	-	-	-	+410	-	RNAV1
CF	RF601	Y	159 (162.6)	3	-	-	+620	-220	RNAV1
DF	RF603	Y	-	-	-	-	+2500	-	RNAV1
DF	RF812	-	-	-	-	-	-	-	RNAV1
TF	RF707	-	353 (355.8)	-	6.3	-	+6000	-	RNAV1
TF	RF708	-	353 (355.8)	-	7.3	-	+FL110	-	RNAV1
TF	SOSIV	-	353 (355.8)	-	6.3	-	-	-	RNAV1

**XENOL 7B (ATC discretion)**

After take-off maintain RWY heading until 2 NM OST DME (MCA 620FT) then turn right (IAS MAX 220 kt) on TR299° to join RDL 261 OST VOR until 20NM OST DME then proceed on TR273° bound to XENOL

MCA: D2 OST DME: 620FT; XENOL: 4000FT

**XENOL 7K**

Path Terminator	Waypoint Identifier	Fly Over	Course °M(°T)	Magnetic Variation	Distance (NM)	Turn Direction	Altitude (ft)	Speed Limit (kt)	Navigation Specification
CA	-	-	159 (162.6)	-	-	-	+410	-	RNAV1
CF	RF601	Y	159 (162.6)	3	-	-	+620	-220	RNAV1
DF	RF603	Y	-	-	-	-	+2500	-	RNAV1
TF	RF709	-	279 (281.2)	-	18.1	-	-	-	RNAV1
TF	XENOL	-	273 (276.2)	-	11.0	-	+4000	-	RNAV1

**XIBRI 8B**

After take-off maintain RWY heading until 2 NM OST DME (MCA 620ft) then turn right (IAS MAX 220 kt) on RDL 187 OST VOR bound to XIBRI

MCA: RF601: 620FT; XIBRI: 3000FT

Path Terminator	Waypoint Identifier	Fly Over	Course °M(°T)	Magnetic Variation	Distance (NM)	Turn Direction	Altitude (ft)	Speed Limit (kt)	Navigation Specification
CA	-	-	159 (162.6)	-	-	-	+410	-	Conventional/RNAV1
CF	RF601	Y	159 (162.6)	3	-	-	+620	-220	Conventional/RNAV1
CF	XIBRI	-	187 (190.4)	3	-	-	+3000	-	Conventional/RNAV1

**SOSIV 7Q**

Path Terminator	Waypoint Identifier	Fly Over	Course °M(°T)	Magnetic Variation	Distance (NM)	Turn Direction	Altitude (ft)	Speed Limit (kt)	Navigation Specification
CA	-	-	159 (162.6)	-	-	-	+410	-	RNAV1
CF	RF601	Y	159 (162.6)	3	-	-	+620	-220	RNAV1
DF	RF603	Y	-	-	-	-	+2500	-	RNAV1
TF	RF711	-	297 (300.2)	-	19.4	-	+6000	-	RNAV1
TF	RF712	-	025 (028.2)	-	15.2	-	+FL110	-	RNAV1
TF	SOSIV	-	025 (028.2)	-	6.3	-	-	-	RNAV1

**INITIAL CLIMB PROCEDURE RWY 16L****NENIG 8C (ATC discretion)**

After take-off maintain RWY heading until crossing RDL 098 OST VOR (MCA 510 ft) then turn right (IAS MAX 210 kt) on TR 309° to join RDL 278 OST VOR bound to NENIG.

MCA: INT RDL 098 OST: 510FT; NENIG: 4000FT

**NENIG 7J**

Path Terminator	Waypoint Identifier	Fly Over	Course °M(°T)	Magnetic Variation	Distance (NM)	Turn Direction	Altitude (ft)	Speed Limit (kt)	Navigation Specification
CA	-	-	159 (162.6)	-	-	-	+405	-	RNAV1
CF	RF602	Y	159 (162.6)	3	-	-	+510	-210	RNAV1
DF	RF603	Y	-	-	-	-	+2500	-	RNAV1
TF	RF711	-	297 (300.2)	-	19.4	-	-	-	RNAV1
TF	NENIG	-	278 (281.1)	-	10.1	-	+4000	-	RNAV1

**SOSAK 9C**

After take-off maintain RWY heading until crossing RDL 098 OST VOR (MCA 510 ft) then turn right (IAS MAX 210 kt) to join RDL 215 OST VOR bound to SOSAK.

MCA: RF602: 510FT; SOSAK: 3000FT

Path Terminator	Waypoint Identifier	Fly Over	Course °M(°T)	Magnetic Variation	Distance (NM)	Turn Direction	Altitude (ft)	Speed Limit (kt)	Navigation Specification
CA	-	-	159 (162.6)	-	-	-	+405	-	Conventional/RNAV1
CF	RF602	Y	159 (162.6)	3	-	-	+510	-210	Conventional/RNAV1
DF	RF603	Y	-	-	-	-	-	-	Conventional/RNAV1
CF	SOSAK	-	215 (218.4)	3	-	-	+3000	-	Conventional/RNAV1

**SOSIV 7C (ATC DISCRETION)**

Path Terminator	Waypoint Identifier	Fly Over	Course °M(°T)	Magnetic Variation	Distance (NM)	Turn Direction	Altitude (ft)	Speed Limit (kt)	Navigation Specification
CA	-	-	159 (162.6)	-	-	-	+405	-	RNAV1
CF	RF602	Y	159 (162.6)	3	-	-	+510	210	RNAV1
CF	RF812	-	309 (312.3)	3	-	-	-	-	RNAV1
TF	RF707	-	353 (355.8)	-	6.3	-	+6000	-	RNAV1
TF	RF708	-	353 (355.8)	-	7.3	-	+FL110	-	RNAV1
TF	SOSIV	-	353 (355.8)	-	6.3	-	-	-	RNAV1

**SOSIV 8J**

Path Terminator	Waypoint Identifier	Fly Over	Course °M(°T)	Magnetic Variation	Distance (NM)	Turn Direction	Altitude (ft)	Speed Limit (kt)	Navigation Specification
CA	-	-	159 (162.6)	-	-	-	+405	-	RNAV1
CF	RF602	Y	159 (162.6)	3	-	-	+510	-210	RNAV1
DF	RF603	Y	-	-	-	-	+2500	-	RNAV1
DF	RF812	-	-	-	-	-	-	-	RNAV1
TF	RF707	-	353 (355.8)	-	6.3	-	+6000	-	RNAV1
TF	RF708	-	353 (355.8)	-	7.3	-	+FL110	-	RNAV1
TF	SOSIV	-	353 (355.8)	-	6.3	-	-	-	RNAV1

**XENOL 7C (ATC discretion)**

After take-off maintain RWY heading until crossing RDL 098 OST VOR (MCA 510ft) then turn right (IAS MAX 210 kt) on TR299° to join RDL 261 OST VOR until 20NM OST DME then proceed on TR273° bound to XENOL.

MCA: INT RDL 098 OST VOR: 510FT; XENOL; 4000FT

**XENOL 7J**

Path Terminator	Waypoint Identifier	Fly Over	Course °M(°T)	Magnetic Variation	Distance (NM)	Turn Direction	Altitude (ft)	Speed Limit (kt)	Navigation Specification
CA	-	-	159 (162.6)	-	-	-	+405	-	RNAV1
CF	RF602	Y	159 (162.6)	3	-	-	+510	-210	RNAV1
DF	RF603	Y	-	-	-	-	+2500	-	RNAV1
TF	RF709	-	279 (281.2)	-	18.1	-	-	-	RNAV1
TF	XENOL	-	273 (276.2)	-	11.0	-	+4000	-	RNAV1

**XIBRI 8C**

After take-off maintain RWY heading until crossing RDL 098 OST VOR (MCA 510 ft) then turn right (IAS MAX 210 kt) to join RDL 187 OST VOR bound to XIBRI

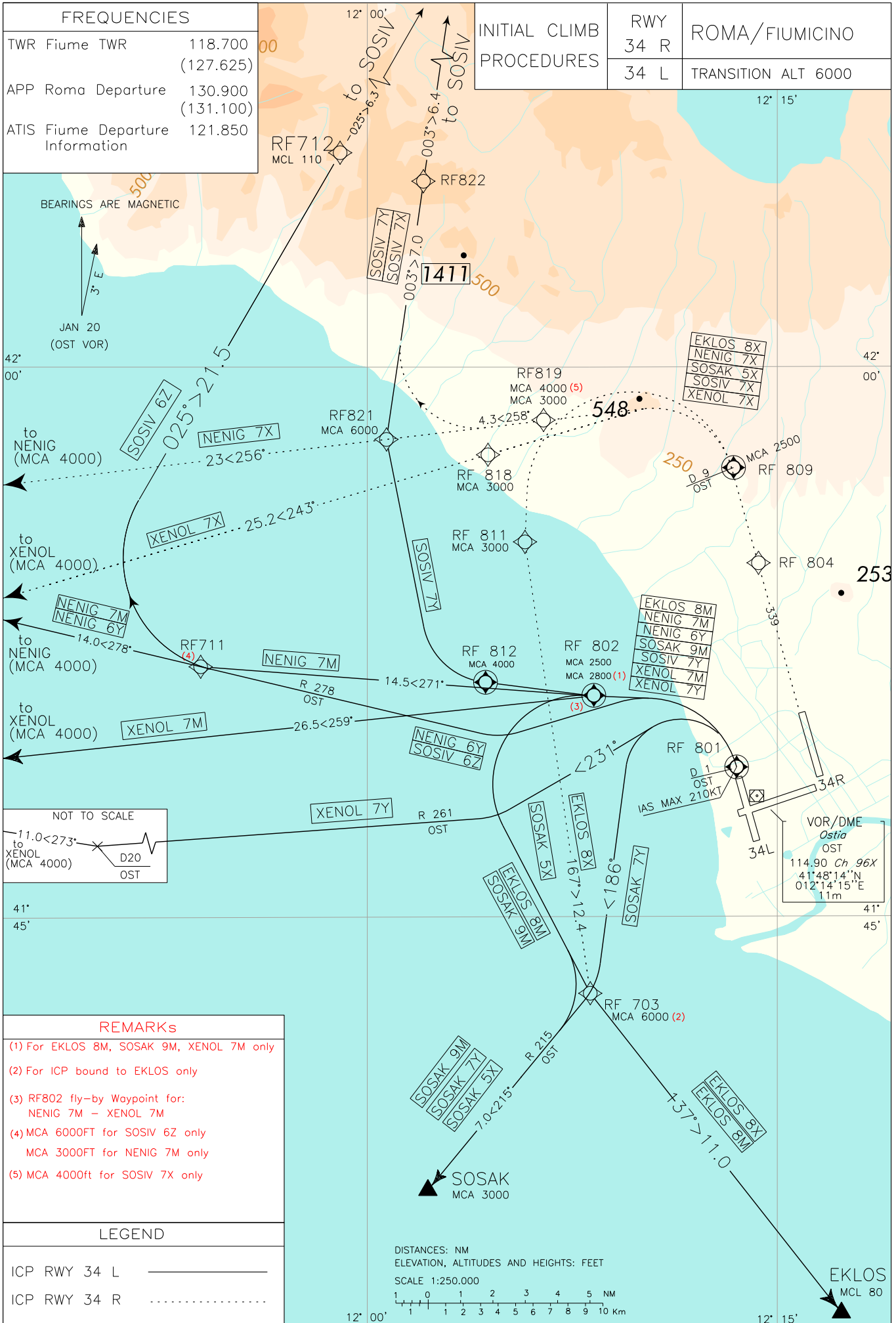
MCA: RF602 510FT; XIBRI 3000FT

Path Terminator	Waypoint Identifier	Fly Over	Course °M(°T)	Magnetic Variation	Distance (NM)	Turn Direction	Altitude (ft)	Speed Limit (kt)	Navigation Specification
CA	-	-	159 (162.6)	-	-	-	+405	-	Conventional/RNAV1
CF	RF602	Y	159 (162.6)	3	-	-	+510	210	Conventional/RNAV1
CF	XIBRI	-	187 (190.4)	3	-	-	+3000	-	Conventional/RNAV1



**WAYPOINT LIST**

<b>Waypoint Identifier</b>	<b>Coordinates</b>
RF601	41°46'15.7N 012°14'42.0E
RF602	41°47'50.8N 012°16'54.5E
RF603	41°42'19.2N 012°11'14.3E
RF707	41°57'25.4N 012°03'40.6E
RF708	42°04'42.2N 012°02'57.8E
RF709	41°46'05.8N 011°47'44.5E
RF711	41°52'03.4N 011°48'47.6E
RF712	42°05'26.0N 011°58'21.1E
RF812	41°51'08.8N 012°04'17.3E



**NOISE ABATEMENT PROCEDURES**

- 1) Departure track include Noise Abatement routing.
- 2) Apply noise abatement technique.
- 3) Pilots shall adopt a minimum climb gradient in accordance with ICAO-Annex 6 provisions for a safe obstacles overflying. Such climb gradient shall be maintained in any foreseeable circumstance.

**INITIAL CLIMB PROCEDURE RWY 34L**

IAS MAX during turn over 1NM OST 210 KT

**Warning:** "Close in " obstacles penetrating OIS 2.5% exist, but they were not considered for the published procedure design gradient

**EKLOS 8M**

Path Terminator	Waypoint Identifier	Fly Over	Course °M(°T)	Magnetic Variation	Distance (NM)	Turn Direction	Altitude (ft)	Speed Limit (kt)	Navigation Specification
CA	-	-	339 (342.6)	-	-	-	+410 FT	-	RNAV1
CF	RF801	Y	339 (342.6)	3	-	-	+410 FT	-210	RNAV1
DF	RF802	Y	-	-	-	-	+2800 FT	-230	RNAV1
DF	RF703	-	-	-	-	-	+6000 FT	-	RNAV1
TF	EKLOS	-	137 (139.7)	-	11.0	-	+FL80	-	RNAV1

**NENIG 7M**

Path Terminator	Waypoint Identifier	Fly Over	Course °M(°T)	Magnetic Variation	Distance (NM)	Turn Direction	Altitude (ft)	Speed Limit (kt)	Navigation Specification
CA	-	-	339 (342.6)	-	-	-	+410 FT	-	RNAV1
CF	RF801	Y	339 (342.6)	3	-	-	+410 FT	-210	RNAV1
DF	RF802	-	-	-	-	-	+2500 FT	-	RNAV1
TF	RF711	-	271 (274.6)	-	14.5	-	+3000 FT	-	RNAV1
TF	NENIG	-	278 (281.1)	-	14.0	-	+4000 FT	-	RNAV1

**NENIG 6Y**

After take-off maintain RWY heading until 1NM OST DME (MCA 410 FT) then turn left (IAS MAX 210KT) to join RDL 278 OST VOR bound to NENIG.

MCA: NENIG 4000FT

**SOSAK 7Y**

After take-off maintain RWY heading until 1NM OST DME (MCA 410 FT) then turn left (IAS MAX 210KT) on TR 186° to join RDL 215 OST VOR bound to SOSAK.

MCA: SOSAK 3000FT

**SOSAK 9M**

Path Terminator	Waypoint Identifier	Fly Over	Course °M(°T)	Magnetic Variation	Distance (NM)	Turn Direction	Altitude (ft)	Speed Limit (kt)	Navigation Specification
CA	-	-	339 (342.6)	-	-	-	+410 FT	-	RNAV1
CF	RF801	Y	339 (342.6)	3	-	-	+410 FT	-210	RNAV1
DF	RF802	Y	-	-	-	-	+2800 FT	-230	RNAV1
DF	RF703	-	-	-	-	-	-	-	RNAV1
TF	SOSAK	-	215 (218.3)	-	7.0	-	+3000 FT	-	RNAV1

**SOSIV 7Y**

Path Terminator	Waypoint Identifier	Fly Over	Course °M(°T)	Magnetic Variation	Distance (NM)	Turn Direction	Altitude (ft)	Speed Limit (kt)	Navigation Specification
CA	-	-	339 (342.6)	-	-	-	+410 FT	-	RNAV1
CF	RF801	Y	339 (342.6)	3	-	-	+410 FT	-210	RNAV1
DF	RF812	Y	-	-	-	-	+4000 FT	-	RNAV1
DF	RF821	-	-	-	-	-	+6000 FT	-	RNAV1
TF	RF822	-	003 (006.2)	-	7.0	-	-	-	RNAV1
TF	SOSIV	-	003 (006.3)	-	6.4	-	+FL110	-	RNAV1

**XENOL 7M**

Path Terminator	Waypoint Identifier	Fly Over	Course °M(°T)	Magnetic Variation	Distance (NM)	Turn Direction	Altitude (ft)	Speed Limit (kt)	Navigation Specification
CA	-	-	339 (342.6)	-	-	-	+410 FT	-	RNAV1
CF	RF801	Y	339 (342.6)	3	-	-	+410 FT	-210	RNAV1
DF	RF802	-	-	-	-	-	+2800 FT	-	RNAV1
TF	XENOL	-	259 (262.1)	-	26.5	-	+4000 FT	-	RNAV1

**XENOL 7Y**

After take-off maintain RWY heading until 1NM OST DME (MCA 410 FT) then turn left (IAS MAX 210KT) on TR 231° to join RDL 261 OST VOR until D20 OST DME then proceed on TR 273° bound to XENOL.

MCA: XENOL 4000FT

**SOSIV 6Z**

<b>Path Terminator</b>	<b>Waypoint Identifier</b>	<b>Fly Over</b>	<b>Course °M(°T)</b>	<b>Magnetic Variation</b>	<b>Distance (NM)</b>	<b>Turn Direction</b>	<b>Altitude (ft)</b>	<b>Speed Limit (kt)</b>	<b>Navigation Specification</b>
CA	-	-	339 (342.6)	-	-	-	+410 FT	-	RNAV1
CF	RF801	Y	339 (342.6)	3	-	-	+410 FT	-210	RNAV1
CF	RF711	Y	278 (281.2)	3	-	-	+6000 FT	-	RNAV1
CF	RF712		025 (028.2)	3	-	-	+FL110	-	RNAV1
TF	SOSIV	-	025 (028.2)	-	6.3	-	-	-	RNAV1

**INITIAL CLIMB PROCEDURE RWY 34R**

Minimum climb gradient required for ATC reasons: 425 ft/NM (7%) until 3000 ft. Pilots unable to comply with this gradient shall advise ATC as soon as possible and require an amended clearance and/or a suitable RWY for take-off

**Warning:** "Close in " obstacles penetrating OIS 2.5% exist, but they were not considered for the published procedure design gradient

**EKLOS 8X**

Path Terminator	Waypoint Identifier	Fly Over	Course °M(°T)	Magnetic Variation	Distance (NM)	Turn Direction	Altitude (ft)	Speed Limit (kt)	Navigation Specification
CA	-	-	339 (342.6)	-	-	-	+413 FT	-	RNAV1
CF	RF804	-	339 (342.6)	3	-	-	-	-	RNAV1
CF	RF809	Y	339 (342.3)	3	-	-	+2500 FT	-230	RNAV1
DF	RF811	-	-	-	-	-	+3000 FT	-	RNAV1
TF	RF703	-	167 (169.9)	-	12.4	-	+6000 FT	-	RNAV1
TF	EKLOS	-	137 (139.7)	-	11.0	-	+FL80	-	RNAV1

**NENIG 7X**

Path Terminator	Waypoint Identifier	Fly Over	Course °M(°T)	Magnetic Variation	Distance (NM)	Turn Direction	Altitude (ft)	Speed Limit (kt)	Navigation Specification
CA	-	-	339 (342.6)	-	-	-	+413 FT	-	RNAV1
CF	RF804	-	339 (342.6)	3	-	-	-	-	RNAV1
CF	RF809	Y	339 (342.3)	3	-	-	+2500 FT	-220	RNAV1
DF	RF819	-	-	-	-	-	+3000 FT	-	RNAV1
TF	NENIG	-	256 (259.1)	-	27.3	-	+4000 FT	-	RNAV1

**SOSAK 5X**

Path Terminator	Waypoint Identifier	Fly Over	Course °M(°T)	Magnetic Variation	Distance (NM)	Turn Direction	Altitude (ft)	Speed Limit (kt)	Navigation Specification
CA	-	-	339 (342.6)	-	-	-	+413 FT	-	RNAV1
CF	RF804	-	339 (342.6)	3	-	-	-	-	RNAV1
CF	RF809	Y	339 (342.3)	3	-	-	+2500 FT	-230	RNAV1
DF	RF811	-	-	-	-	-	+3000 FT	-	RNAV1
TF	RF703	-	167 (169.9)	-	12.4	-	-	-	RNAV1
TF	SOSAK	-	215 (218.3)	-	7.0	-	-	-	RNAV1

**SOSIV 7X**

Path Terminator	Waypoint Identifier	Fly Over	Course °M(°T)	Magnetic Variation	Distance (NM)	Turn Direction	Altitude (ft)	Speed Limit (kt)	Navigation Specification
CA	-	-	339 (342.6)	-	-	-	+413 FT	-	RNAV1
CF	RF804	-	339 (342.6)	3	-	-	-	-	RNAV1
CF	RF809	Y	339 (342.3)	3	-	-	+2500 FT	-210	RNAV1
DF	RF819	-	-	-	-	-	+4000 FT	-	RNAV1
TF	RF821	-	258 (261.2)	-	4.3	-	+6000 FT	-210	RNAV1
TF	RF822	-	003 (006.2)	-	7.0	-	-	-	RNAV1
TF	SOSIV	-	003 (006.3)	-	6.4	-	+FL110	-	RNAV1

**XENOL 7X**

Path Terminator	Waypoint Identifier	Fly Over	Course °M(°T)	Magnetic Variation	Distance (NM)	Turn Direction	Altitude (ft)	Speed Limit (kt)	Navigation Specification
CA	-	-	339 (342.6)	-	-	-	+413 FT	-	RNAV1
CF	RF804	-	339 (342.6)	3	-	-	-	-	RNAV1
CF	RF809	Y	339 (342.3)	3	-	-	+2500 FT	-240	RNAV1
DF	RF818	-	-	-	-	-	+3000 FT	-	RNAV1
TF	XENOL	-	243 (246.3)	-	25.2	-	+4000 FT-	-	RNAV1

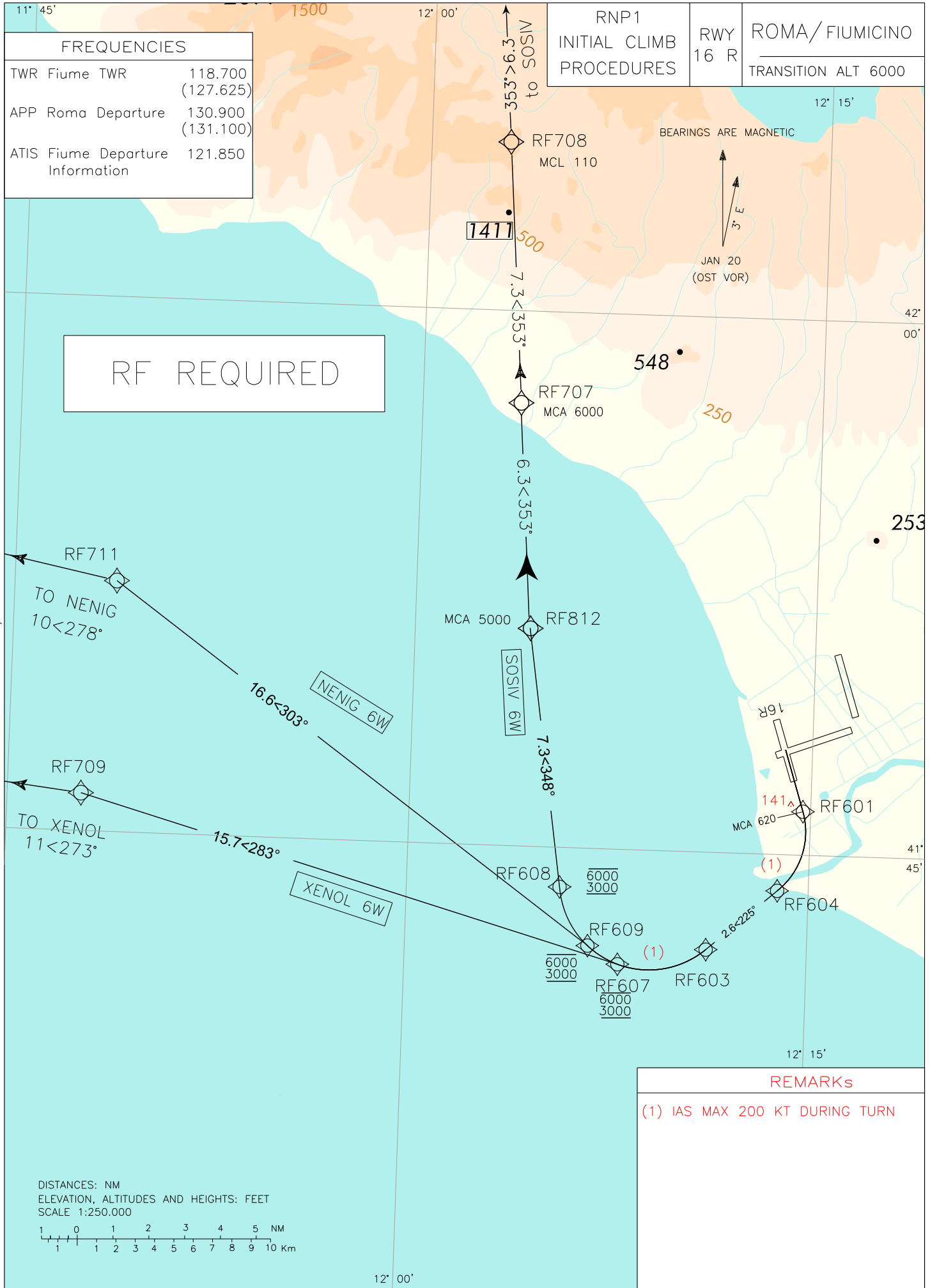
**WAYPOINT LIST**

Waypoint Identifier	Coordinates
RF703	41°42'47.4N 012°08'28.4E
RF711	41°52'03.4N 011°48'47.6E
RF712	42°05'26.0N 011°58'21.1E
RF801	41°49'04.4N 012°13'31.3E
RF802	41°50'52.3N 012°08'13.1E
RF804	41°54'38.5N 012°14'04.6E
RF809	41°57'11.3N 012°12'59.4E
RF811	41°55'00.0N 012°05'33.0E
RF812	41°51'08.8N 012°04'17.3E
RF818	41°57'20.1N 012°04'05.7E
RF819	41°58'18.7N 012°06'04.6E
RF821	41°57'39.3N 012°00'22.7E
RF822	42°04'39.8N 012°01'24.3E

Intenzionalmente bianca

*Intentionally left blank*





CHANGE: MAGNETIC DECLINATION UPDATED, GEOGRAPHICAL GRID REVISED

## INITIAL CLIMB PROCEDURE RNP1 with RF functionality RWY 16R

## NENIG 6W

Path Terminator	Waypoint Name	Fly Over	Course °Mag (°T)	Magnetic Variation	Distance (NM)	Turn Direction	Altitude Constraint	Speed Limit (IAS)	Navigation Performance
CA	-	-	159° (162.6°)	3°	-	-	+410	-	RNP1
CF	RF601	-	159° (162.6°)	3°	-	-	+620	-200	RNP1
RF centre: RF620 r=2.1NM	RF604	-	-	-	2.5	R	-	-200	RNP1
TF	RF603	-	225° (228.7°)	-	2.6	-	-	-200	RNP1
RF centre: RF606 r= 2.5NM	RF609	-	-	-	3.6	R	-6000 +3000	-200	RNP1
TF	RF711	-	303° (305.9°)	-	16.7	-	-	-200	RNP1
TF	NENIG	-	278° (281.2°)	-	10.0	-	-	-	RNP1

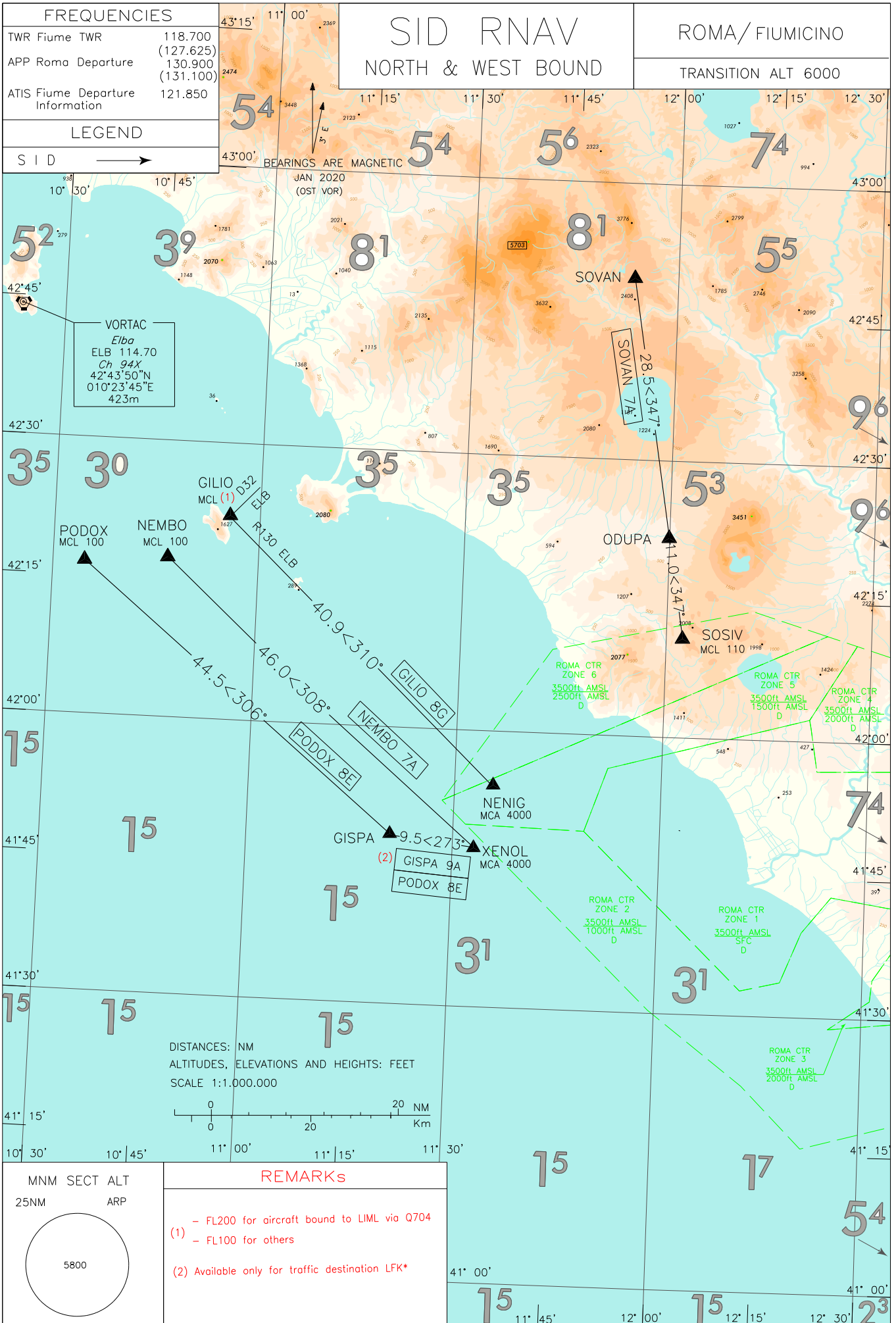
## SOSIV 6W

Path Terminator	Waypoint Name	Fly Over	Course °Mag (°T)	Magnetic Variation	Distance (NM)	Turn Direction	Altitude Constraint	Speed Limit (IAS)	Navigation Performance
CA	-	-	159° (162.6°)	3°	-	-	+410	-	RNP1
CF	RF601	-	159° (162.6°)	3°	-	-	+620	-200	RNP1
RF centre: RF620 r=2.1NM	RF604	-	-	-	2.5	R	-	-200	RNP1
TF	RF603	-	225° (228.7°)	-	2.6	-	-	-200	RNP1
RF centre: RF606 r=2.5NM	RF608	-	-	-	5.5	R	-6000 +3000	-200	RNP1
TF	RF812	-	348° (351.6°)	-	7.3	-	+5000	-200	RNP1
TF	RF707	-	353° (355.8°)	-	6.3	-	+6000	-	RNP1
TF	RF708	-	353° (355.8°)	-	7.3	-	+FL110	-	RNP1
TF	SOSIV	-	353° (355.8°)	-	6.3	-	-	-	RNP1

**XENOL 6W**

Path Terminator	Waypoint Name	Fly Over	Course °Mag (°T)	Magnetic Variation	Distance (NM)	Turn Direction	Altitude Constraint	Speed Limit (IAS)	Navigation Performance
CA	-	-	159° (162.6°)	3°	-	-	+410	-	RNP1
CF	RF601	-	159° (162.6°)	3°	-	-	+620	-200	RNP1
RF centre: RF620 r=2.1NM	RF604	-	-	-	2.5	R	-	-200	RNP1
TF	RF603	-	225° (228.7°)	-	2.6	-	-	-200	RNP1
RF centre: RF606 r=2.5NM	RF607	-	-	-	2.6	R	-6000 +3000	-200	RNP1
TF	RF709	-	283° (285.8°)	-	15.7	-	-	-200	RNP1
TF	XENOL	-	273° (276.4°)	-	11.0	-	-	-	RNP1

Waypoint Identifier	Coordinates
RF601	41°46'15.68"N 012°14'42.00"E
RF603	41°42'19.24"N 012°11'14.30"E
RF604	41°44'01.66"N 012°13'49.99"E
RF607	41°41'49.84"N 012°07'57.93"E
RF608	41°43'56.33"N 012°05'42.89"E
RF609	41°42'19.44"N 012°06'49.63"E
RF707	41°57'25.40"N 012°03'40.60"E
RF708	42°04'42.22"N 012°02'57.76"E
RF709	41°46'05.80"N 011°47'44.47"E
RF711	41°52'03.44"N 011°48'47.61"E
RF812	41°51'08.83"N 012°04'17.30"E
RF arc centre Identifier	Coordinates
RF620	41°45'37.91"N 012°12'01.36"E
RF606	41°44'12.00"N 012°09'02.12"E



Initial climb procedure executed:

**SID DESCRIPTION****GILIO 8G**

Proceed on TR 310° (RDL 130 ELB VOR ) bound to GILIO

MCA/MCL: NENIG: 4000FT; GILIO (\*)

Path Terminator	Waypoint Identifier	Fly Over	Course °M(°T)	Magnetic Variation	Distance (NM)	Turn Direction	Altitude (ft)	Speed Limit (kt)	Navigation Specification
IF	NENIG	-	-	-	-	-	+4000	-	Conventional/RNAV1
TF	GILIO	-	310 (313.0)	-	40.9	-	(*)	-	Conventional/RNAV1

(\*) FL200 for aircraft bound to LIML via Q704/ FL100 for others

**GISPA 9A** (Available only for traffic destination LFK\*)

Path Terminator	Waypoint Identifier	Fly Over	Course °M(°T)	Magnetic Variation	Distance (NM)	Turn Direction	Altitude (ft)	Speed Limit (kt)	Navigation Specification
IF	XENOL	-	-	-	-	-	+4000	-	RNAV1
TF	GISPA	-	273 (276.1)	-	9.5	-	-	-	RNAV1

**NEMBO 7A**

Path Terminator	Waypoint Identifier	Fly Over	Course °M(°T)	Magnetic Variation	Distance (NM)	Turn Direction	Altitude (ft)	Speed Limit (kt)	Navigation Specification
IF	XENOL	-	-	-	-	-	+4000	-	RNAV1
TF	NEMBO	-	308 (310.8)	-	46.0	-	+FL100	-	RNAV1

**PODOX 8E**

Path Terminator	Waypoint Identifier	Fly Over	Course °M(°T)	Magnetic Variation	Distance (NM)	Turn Direction	Altitude (ft)	Speed Limit (kt)	Navigation Specification
IF	XENOL	-	-	-	-	-	+4000	-	RNAV1
TF	GISPA	-	273 (276.1)	-	9.5	-	-	-	RNAV1
TF	PODOX	-	306 (309.3)	-	44.5	-	+FL100	-	RNAV1

**SOVAN 7A**

Path Terminator	Waypoint Identifier	Fly Over	Course °M(°T)	Magnetic Variation	Distance (NM)	Turn Direction	Altitude (ft)	Speed Limit (kt)	Navigation Specification
IF	SOSIV	-	-	-	-	-	+FL110	-	RNAV1
TF	ODUPA	-	347 (350.5)	-	11.0	-	-	-	RNAV1
TF	SOVAN	-	347 (350.5)	-	28.5	-	-	-	RNAV1

Intenzionalmente bianca

*Intentionally left blank*



## SID DESCRIPTION

**ESINO 7H**

Proceed via SOSAK (RDL 215 OST VOR) – TORLI – ESINO.

MCA/MCL: TORLI 3000 FT; ESINO FL 90 (if proceeding via M126), FL 100 (if proceeding via Z924 or M738)

Path Terminator	Waypoint Identifier	Fly Over	Course °M(°T)	Magnetic Variation	Distance (NM)	Turn Direction	Altitude (ft)	Speed Limit (kt)	Navigation Specification
IF	SOSAK	-	-	-	-	-	-	-	Conventional/ RNAV1
TF	TORLI	-	215 (218.3)	-	1.9	-	+3000	-	Conventional/ RNAV1
TF	ESINO	-	215 (218.3)	-	16.0	-	(*)	-	Conventional/ RNAV1

(\*) FL90 if proceeding via M126; FL100 if proceeding via Z924 or M738

**KONUT 8A**

Proceed via SOSAK - TORLI, then turn left on TR 177° bound to KONUT.

MCA/MCL: TORLI 3000 FT; KONUT FL 100

Path Terminator	Waypoint Identifier	Fly Over	Course °M(°T)	Magnetic Variation	Distance (NM)	Turn Direction	Altitude (ft)	Speed Limit (kt)	Navigation Specification
IF	SOSAK	-	-	-	-	-	-	-	Conventional/ RNAV1
TF	TORLI	-	215 (218.3)	-	1.9	-	+3000	-	Conventional/ RNAV1
TF	KONUT	-	177 (180.3)	-	18.2	-	+FL100	-	Conventional/ RNAV1

**PEPIX 9A**

Proceed via XIBRI – ELVIN (RDL 187 OST VOR) until 27 NM OST DME, then turn left until joining RDL 159 TAQ VOR bound to PEPIX.

MCA/MCL: ELVIN 3000 FT; PEPIX FL 100

Path Terminator	Waypoint Identifier	Fly Over	Course °M(°T)	Magnetic Variation	Distance (NM)	Turn Direction	Altitude (ft)	Speed Limit (kt)	Navigation Specification
IF	XIBRI	-	-	-	-	-	-	-	Conventional/ RNAV1
TF	ELVIN	-	187 (190.4)	-	3.9	-	+3000	-	Conventional/ RNAV1
TF	ADMOP	-	187 (190.4)	-	10.5	-	-	-	Conventional/ RNAV1
TF	PEPIX	-	159 (162.2)	-	10.2	-	+FL100	-	Conventional/ RNAV1



**PEPIX 9B**

Proceed via SOSAK (RDL 215 OST VOR) - TORLI then turn left on TR 177° to KONUT, then turn left to join and follow RNAV route L50 bound to PEPHX.

MCA/MCL: TORLI 3000 FT; KONUT FL 100

Path Terminator	Waypoint Identifier	Fly Over	Course °M(°T)	Magnetic Variation	Distance (NM)	Turn Direction	Altitude (ft)	Speed Limit (kt)	Navigation Specification
IF	SOSAK	-	-	-	-	-	-	-	Conventional/ RNAV1
TF	TORLI	-	215 (218.3)	-	1.9	-	+3000	-	Conventional/ RNAV1
TF	KONUT	-	177 (180.3)	-	18.2	-	+FL100	-	Conventional/ RNAV1
TF	PEPIX	-	133 (135.7)	-	11.1	-	+FL100	-	Conventional/ RNAV1

**RIFFI 9G**

Proceed via XIBRI (RDL 187 OST VOR) – ELVIN then turn left on TR 131° (RDL 311 PNZ VOR) bound to RIFFI.

MCA/MCL: ELVIN 3000 FT; RIFFI FL 90

Path Terminator	Waypoint Identifier	Fly Over	Course °M(°T)	Magnetic Variation	Distance (NM)	Turn Direction	Altitude (ft)	Speed Limit (kt)	Navigation Specification
IF	XIBRI	-	-	-	-	-	-	-	Conventional/ RNAV1
TF	ELVIN	-	187 (190.4)	-	3.9	-	+3000	-	Conventional/ RNAV1
TF	RIFFI	-	131 (134.0)	-	23.3	-	+FL90	-	Conventional/ RNAV1

**RIFFI 9H**

On SOSAK turn left (IAS MAX 210KT) on TR 131° (RDL 311 PNZ VOR) bound to RIFFI.

MCA/MCL: SOSAK 3000 FT; RIFFI FL 90

Path Terminator	Waypoint Identifier	Fly Over	Course °M(°T)	Magnetic Variation	Distance (NM)	Turn Direction	Altitude (ft)	Speed Limit (kt)	Navigation Specification
IF	SOSAK	-	-	-	-	-	+3000		Conventional/ RNAV1
TF	TORLI	-	215 (218.3)	-	1.9	-	-	-210	Conventional/ RNAV1
TF	RIFFI	-	131 (134.0)	-	32.2	-	+FL90	-	Conventional/ RNAV1

**ROTUN 8A**

Proceed via XIBRI – ELVIN (RDL 187 OST VOR) until 27 NM OST DME, then turn left until joining RDL 159 TAQ VOR bound to PEPIX then ROTUN.

MCA/MCL: ELVIN 3000 FT; PEPIX FL 100; ROTUN FL 110

Path Terminator	Waypoint Identifier	Fly Over	Course °M(°T)	Magnetic Variation	Distance (NM)	Turn Direction	Altitude (ft)	Speed Limit (kt)	Navigation Specification
IF	XIBRI	-	-	-	-	-	-	-	Conventional/ RNAV1
TF	ELVIN	-	187 (190.4)	-	3.9	-	+3000	-	Conventional/ RNAV1
TF	ADMOP	-	187 (190.4)	-	10.5	-	-	-	Conventional/ RNAV1
TF	PEPIX	-	159 (162.2)	-	10.2	-	+FL100	-	Conventional/ RNAV1
TF	ROTUN	-	159 (162.3)	-	17.5	-	+FL110	-	Conventional/ RNAV1

**ROTUN 8B**

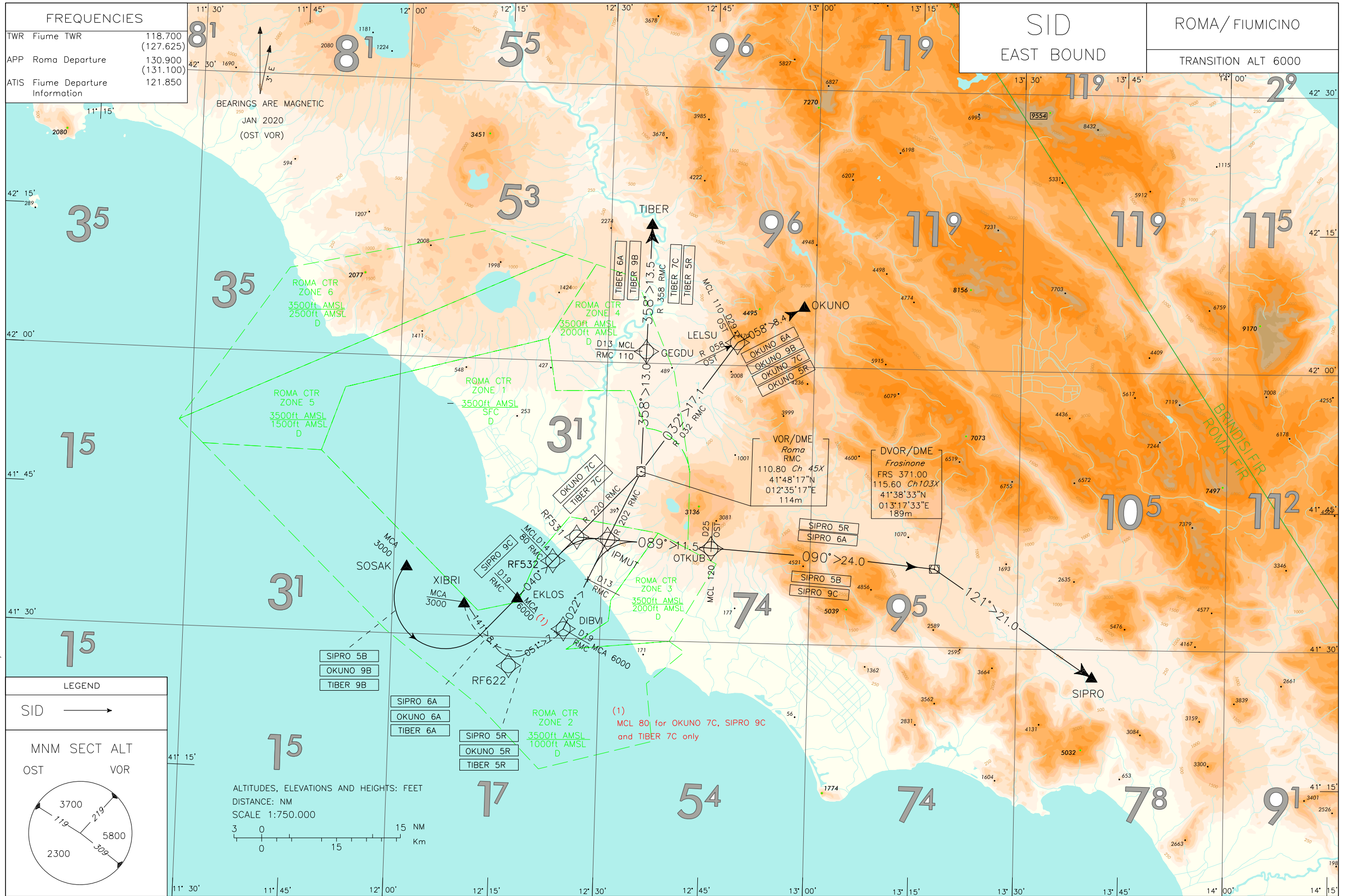
Proceed via SOSAK (RDL 215 OST VOR) - TORLI, then turn left on TR 177° to KONUT, then turn left to join and follow RNAV route L50 to PEPIX then turn right on TR 159° (RDL 159 TAQ VOR) bound to ROTUN.

MCA/MCL: TORLI 3000 FT; KONUT FL 100; ROTUN FL 110

Path Terminator	Waypoint Identifier	Fly Over	Course °M(°T)	Magnetic Variation	Distance (NM)	Turn Direction	Altitude (ft)	Speed Limit (kt)	Navigation Specification
IF	SOSAK	-	-	-	-	-	-	-	Conventional/ RNAV1
TF	TORLI	-	215 (218.3)	-	1.9	-	+3000	-	Conventional/ RNAV1
TF	KONUT	-	177 (180.3)	-	18.2	-	+FL100	-	Conventional/ RNAV1
TF	PEPIX	-	133 (135.7)	-	11.1	-	+FL100	-	Conventional/ RNAV1
TF	ROTUN	-	159 (162.3)	-	17.5	-	+FL110	-	Conventional/ RNAV1

Intenzionalmente bianca

*Intentionally left blank*



## SID DESCRIPTION

## OKUNO 6A (ATC DISCRETION)

Over XIBRI turn left until joining RDL 202 RMC VOR (TR 022°) bound to RMC VOR. Leave RMC VOR on RDL 032 (TR 032°) until joining RDL 058 OST VOR (TR 058°) bound to OKUNO.

MCA/MCL: XIBRI 3000 FT; DIBVI 6000 FT; LELSU FL 110

Path Terminator	Waypoint Identifier	Fly Over	Course °M(°T)	Magnetic Variation	Distance (NM)	Turn Direction	Altitude (ft)	Speed Limit (kt)	Navigation Specification
IF	XIBRI	Y	-	-	-	-	+3000	-	Conventional/RNAV1
DF	DIBVI	-	-	-	-	L	+6000	-	Conventional/RNAV1
TF	RMC	-	022 (025.0)	-	19.0	-	-	-	Conventional/RNAV1
TF	LELSU	-	032 (035.2)	-	17.1	-	+FL110	-	Conventional/RNAV1
TF	OKUNO	-	058 (061.0)	-	8.4	-	-	-	Conventional/RNAV1

## OKUNO 5R

Path Terminator	Waypoint Identifier	Fly Over	Course °M(°T)	Magnetic Variation	Distance (NM)	Turn Direction	Altitude (ft)	Speed Limit (kt)	Navigation Specification
IF	XIBRI	-	-	-	-	-	+3000	-	RNAV1
TF	RF622	-	141 (144.0)	-	8.1	-	-	-	RNAV1
TF	DIBVI	-	051 (053.9)	-	7.1	L	+6000	-	RNAV1
TF	RMC	-	022 (025.0)	-	19.0	-	-	-	RNAV1
TF	LELSU	-	032 (035.2)	-	17.1	-	+FL110	-	RNAV1
TF	OKUNO	-	058 (061.0)	-	8.4	-	-	-	RNAV1

## OKUNO 9B

Over SOSAK turn left to join RDL 220 RMC VOR (TR 040°) to RMC VOR. Leave RMC VOR on RDL 032 (TR 032°) until joining RDL 058 OST VOR (TR 058°) bound to OKUNO.

MCA/MCL: SOSAK: 3000 FT; EKLOS: 6000 FT; RF532: FL 80; LELSU: FL 110

Path Terminator	Waypoint Identifier	Fly Over	Course °M(°T)	Magnetic Variation	Distance (NM)	Turn Direction	Altitude (ft)	Speed Limit (kt)	Navigation Specification
IF	SOSAK	Y	-	-	-	-	+3000	-	Conventional/RNAV1
DF	EKLOS	-	-	-	-	L	+6000	-	Conventional/RNAV1
TF	RF532	-	040 (043.0)	-	5.0	-	+FL80	-	Conventional/RNAV1
TF	RMC	-	040 (043.0)	-	14.0	-	-	-	Conventional/RNAV1
TF	LELSU	-	032 (035.2)	-	17.1	-	+FL110	-	Conventional/RNAV1
TF	OKUNO	-	058 (061.0)	-	8.4	-	-	-	Conventional/RNAV1

**OKUNO 7C**

Over EKLOS proceed on RDL 220 RMC VOR (TR 040°) bound to RMC VOR. Leave RMC VOR on RDL 032 (TR 032°) until joining RDL 058 OST VOR (TR 058°) bound to OKUNO.

MCL: EKLOS FL 80; LELSU FL 110

Path Terminator	Waypoint Identifier	Fly Over	Course °M(°T)	Magnetic Variation	Distance (NM)	Turn Direction	Altitude (ft)	Speed Limit (kt)	Navigation Specification
IF	EKLOS	-	-	-	-	-	+FL80	-	Conventional/ RNAV1
TF	RMC	-	040 (043.0)	-	19.0	-	-	-	Conventional/ RNAV1
TF	LELSU	-	032 (035.2)	-	17.1	-	+FL110	-	Conventional/ RNAV1
TF	OKUNO	-	058 (061.0)	-	8.4	-	-	-	Conventional/ RNAV1

**SIPRO 6A (ATC DISCRETION)**

Path Terminator	Waypoint Identifier	Fly Over	Course °M(°T)	Magnetic Variation	Distance (NM)	Turn Direction	Altitude (ft)	Speed Limit (kt)	Navigation Specification
IF	XIBRI	Y	-	-	-	-	+3000	-	RNAV1
DF	DIBVI	-	-	-	-	L	+6000	-	RNAV1
TF	IPMUT	-	022 (024.9)	-	10.1	-	-	-	RNAV1
TF	OTKUB	-	089 (092.6)	-	11.5	-	+FL120	-	RNAV1
TF	FRS	-	090 (093.0)	-	24.0	-	-	-	RNAV1
TF	SIPRO	-	121 (124.1)	-	21.0	-	-	-	RNAV1

**SIPRO 5R**

Path Terminator	Waypoint Identifier	Fly Over	Course °M(°T)	Magnetic Variation	Distance (NM)	Turn Direction	Altitude (ft)	Speed Limit (kt)	Navigation Specification
IF	XIBRI	-	-	-	-	-	+3000	-	RNAV1
TF	RF622	-	141 (144.0)	-	8.1	-	-	-	RNAV1
TF	DIBVI	-	051 (053.9)	-	7.1	L	+6000	-	RNAV1
TF	IPMUT	-	022 (024.9)	-	10.1	-	-	-	RNAV1
TF	OTKUB	-	089 (092.6)	-	11.5	-	+FL120	-	RNAV1
TF	FRS	-	090 (093.0)	-	24.0	-	-	-	RNAV1
TF	SIPRO	-	121 (124.1)	-	21.0	-	-	-	RNAV1

**SIPRO 5B**

Path Terminator	Waypoint Identifier	Fly Over	Course °M(°T)	Magnetic Variation	Distance (NM)	Turn Direction	Altitude (ft)	Speed Limit (kt)	Navigation Specification
IF	SOSAK	Y	-	-	-	-	+3000	-	RNAV1
DF	EKLOS	-	-	-	-	L	+6000	-	RNAV1
TF	RF532	-	040 (043.0)	-	5.0	-	+FL80	-	RNAV1
TF	RF531	-	040 (043.0)	-	3.1	-	-	-	RNAV1
TF	OTKUB	-	089 (092.6)	-	15.2	-	+FL120	-	RNAV1
TF	FRS	-	090 (093.0)	-	24.0	-	-	-	RNAV1
TF	SIPRO	-	121 (124.1)	-	21.0	-	-	-	RNAV1

**SIPRO 9C**

Path Terminator	Waypoint Identifier	Fly Over	Course °M(°T)	Magnetic Variation	Distance (NM)	Turn Direction	Altitude (ft)	Speed Limit (kt)	Navigation Specification
IF	EKLOS	-	-	-	-	-	+FL80	-	RNAV1
TF	RF531	-	040 (043.0)	-	8.1	-	-	-	RNAV1
TF	OTKUB	-	089 (092.6)	-	15.2	-	+FL120	-	RNAV1
TF	FRS	-	090 (093.0)	-	24.0	-	-	-	RNAV1
TF	SIPRO	-	121 (124.1)	-	21.0	-	-	-	RNAV1

**TIBER 6A (ATC DISCRETION)**

Over XIBRI turn left until joining RDL 202 RMC VOR (TR 022°) bound to RMC VOR. Leave RMC VOR on RDL 358 (TR 358°) bound to TIBER.

MCA/MCL: XIBRI 3000 FT; DIBVI 6000 FT; GEGDU FL110

Path Terminator	Waypoint Identifier	Fly Over	Course °M(°T)	Magnetic Variation	Distance (NM)	Turn Direction	Altitude (ft)	Speed Limit (kt)	Navigation Specification
IF	XIBRI	Y	-	-	-	-	+3000	-	Conventional/ RNAV1
DF	DIBVI	-	-	-	-	L	+6000	-	Conventional/ RNAV1
TF	RMC	-	022 (025.0)	-	19.0	-	-	-	Conventional/ RNAV1
TF	GEGDU	-	358 (001.0)	-	13.0	-	+FL110	-	Conventional/ RNAV1
TF	TIBER	-	358 (001.0)	-	13.5	-	-	-	Conventional/ RNAV1

**TIBER 9B**

Over SOSAK turn left until joining RDL 220 RMC VOR (TR 040°) bound to RMC VOR. Leave RMC VOR on RDL 358 (TR 358°) bound to TIBER.

MCA/MCL: SOSAK: 3000 ft; EKLOS: 6000 ft; RF532: FL 80; GEGDU: FL110

Path Terminator	Waypoint Identifier	Fly Over	Course °M(°T)	Magnetic Variation	Distance (NM)	Turn Direction	Altitude (ft)	Speed Limit (kt)	Navigation Specification
IF	SOSAK	Y	-	-	-	-	+3000	-	Conventional/ RNAV1
DF	EKLOS	-	-	-	-	L	+6000	-	Conventional/ RNAV1
TF	RF532	-	040 (043.0)	-	5.0	-	+FL80	-	Conventional/ RNAV1
TF	RMC	-	040 (043.0)	-	14.0	-	-	-	Conventional/ RNAV1
TF	GEGDU	-	358 (001.0)	-	13.0	-	+FL110	-	Conventional/ RNAV1
TF	TIBER	-	358 (001.0)	-	13.5	-	-	-	Conventional/ RNAV1



**TIBER 7C**

Over EKLOS proceed on RDL 220 RMC VOR (TR 040°) bound to RMC VOR. Leave RMC VOR on RDL 358 (TR 358°) bound to TIBER.

MCL: EKLOS FL 80; GEGDU: FL110

Path Terminator	Waypoint Identifier	Fly Over	Course °M(°T)	Magnetic Variation	Distance (NM)	Turn Direction	Altitude (ft)	Speed Limit (kt)	Navigation Specification
IF	EKLOS	-	-	-	-	-	+FL80	-	Conventional/ RNAV1
TF	RMC	-	040 (043.0)	-	19.0	-	-	-	Conventional/ RNAV1
TF	GEGDU	-	358 (001.0)	-	13.0	-	+FL110	-	Conventional/ RNAV1
TF	TIBER	-	358 (001.1)	-	13.5	-	-	-	Conventional/ RNAV1

**TIBER 5R**

Path Terminator	Waypoint Identifier	Fly Over	Course °M(°T)	Magnetic Variation	Distance (NM)	Turn Direction	Altitude (ft)	Speed Limit (kt)	Navigation Specification
IF	XIBRI	-	-	-	-	-	+3000	-	RNAV1
TF	RF622	-	141 (144.0)	-	8.1	-	-	-	RNAV1
TF	DIBVI	-	051 (053.9)	-	7.1	L	+6000	-	RNAV1
TF	RMC	-	022 (025.0)	-	19.0	-	-	-	RNAV1
TF	GEGDU	-	358 (001.0)	-	13.0	-	+FL110	-	RNAV1
TF	TIBER	-	358 (001.0)	-	13.5	-	-	-	RNAV1

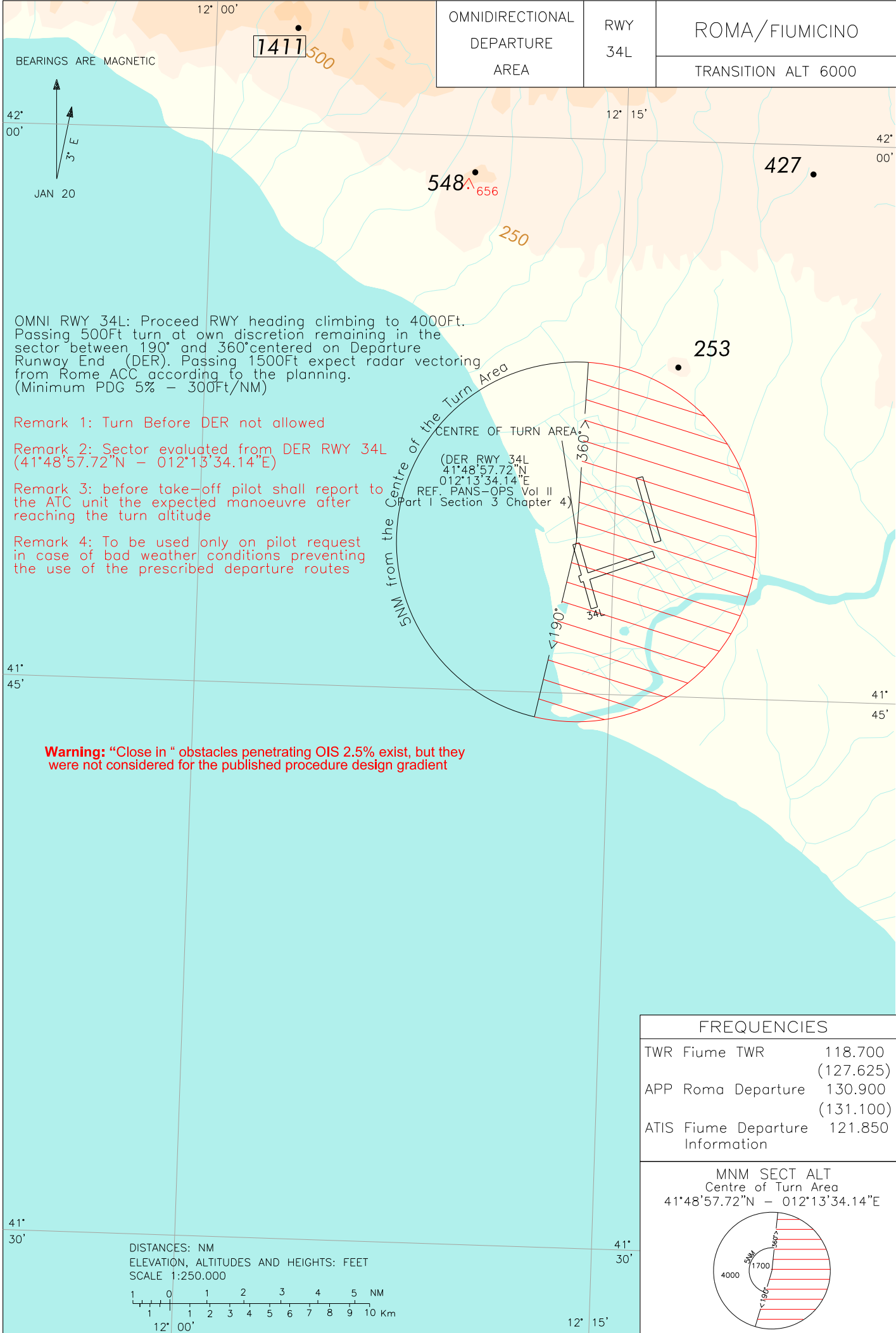
**WAYPOINT LIST**

Waypoint Identifier	Coordinates
RF531	41°40'23.1"N 012°25'24.4"E
RF532	41°38'06.1"N 012°22'33.7"E
RF622	41°26'52.2"N 012°16'59.5"E

Intenzionalmente bianca

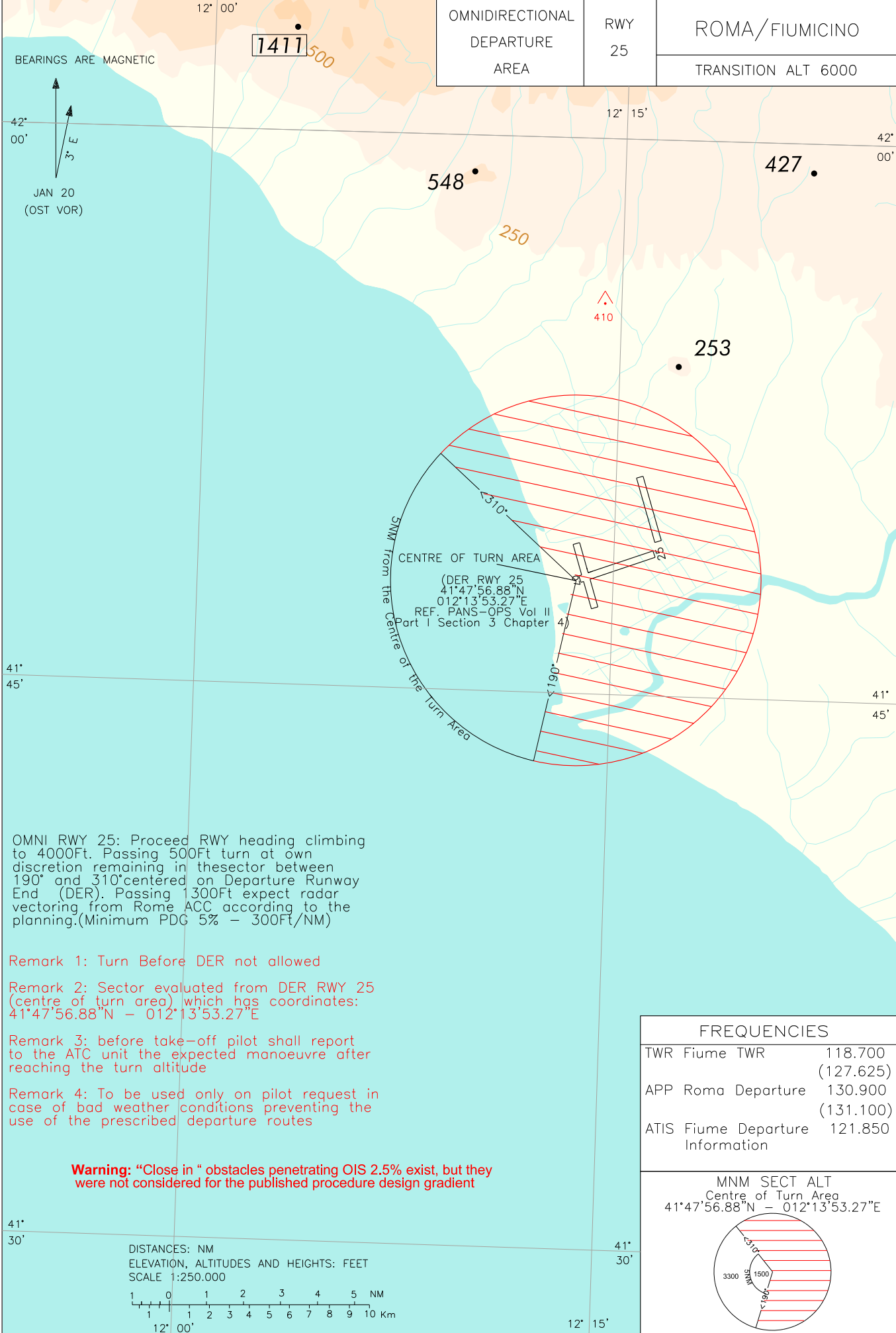
*Intentionally left blank*

OMNIDIRECTIONAL DEPARTURE AREA	RWY 34L	ROMA/FIUMICINO
		TRANSITION ALT 6000



CHANGE: CLOSE IN OBSTACLES WARNING ADDED

OMNIDIRECTIONAL DEPARTURE AREA	RWY	ROMA/FIUMICINO
	25	TRANSITION ALT 6000



CHANGE: CLOSE IN OBSTACLES WARNING ADDED

OMNI RWY 25: Proceed RWY heading climbing to 4000ft. Passing 500ft turn at own discretion remaining in this sector between 190° and 310° centered on Departure Runway End (DER). Passing 1300ft expect radar vectoring from Rome ACC according to the planning. (Minimum PDG 5% - 300ft/NM)

Remark 1: Turn Before DER not allowed

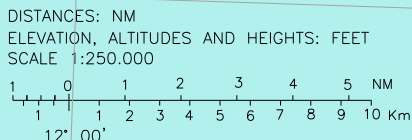
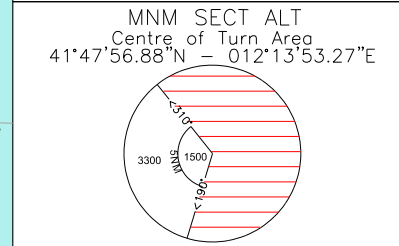
Remark 2: Sector evaluated from DER RWY 25 (centre of turn area) which has coordinates: 41°47'56.88"N - 012°13'53.27"E

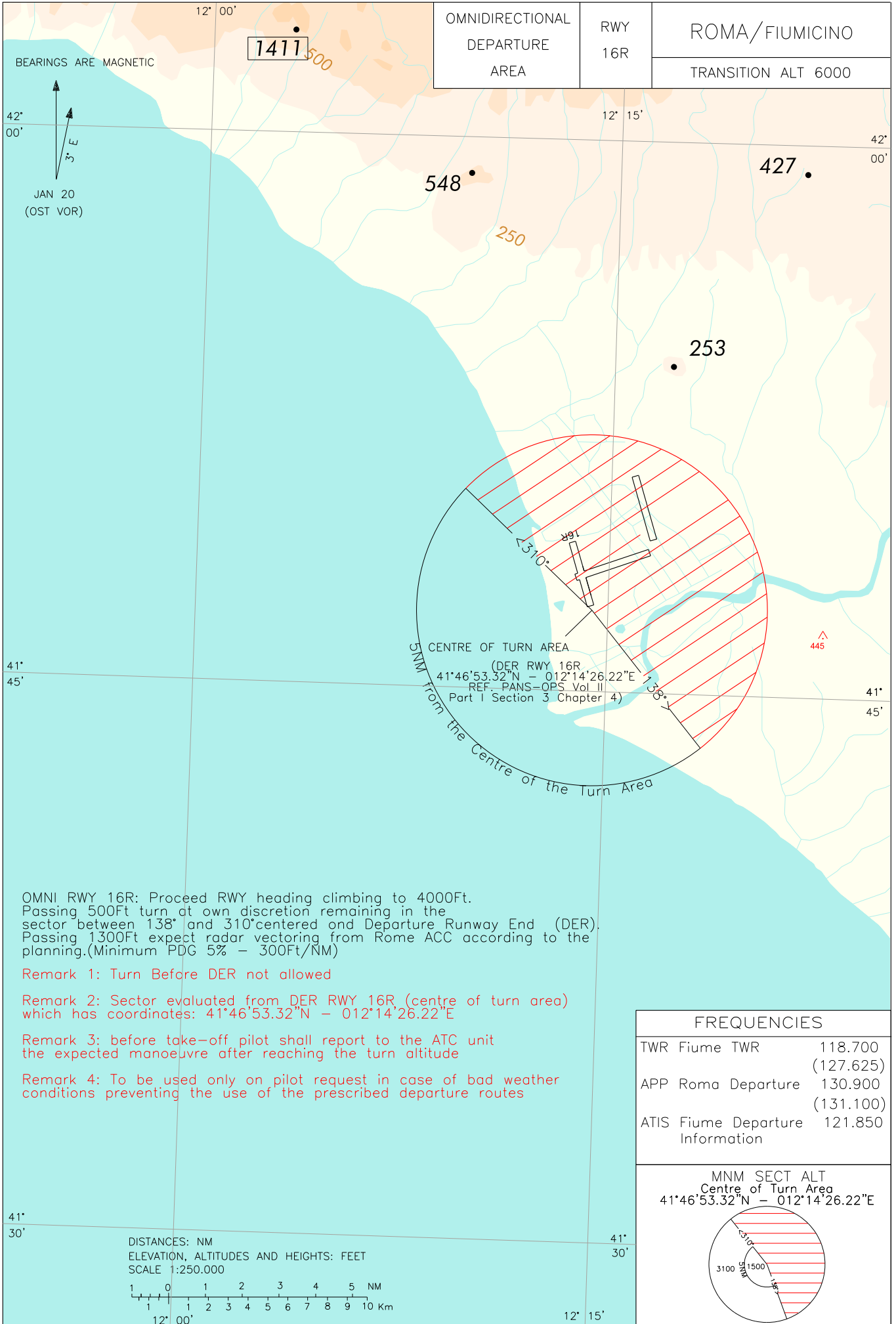
Remark 3: before take-off pilot shall report to the ATC unit the expected manoeuvre after reaching the turn altitude

Remark 4: To be used only on pilot request in case of bad weather conditions preventing the use of the prescribed departure routes

**Warning:** "Close in" obstacles penetrating OIS 2.5% exist, but they were not considered for the published procedure design gradient

FREQUENCIES	
TWR Fiume TWR	118.700 (127.625)
APP Roma Departure	130.900 (131.100)
ATIS Fiume Departure Information	121.850





CHANGE: REPRINTING