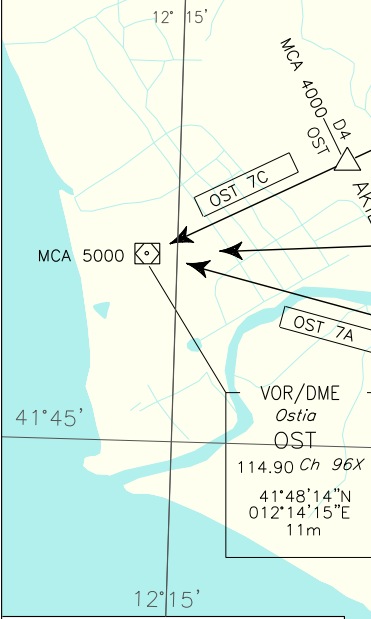
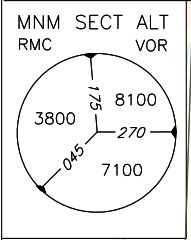


CHANGE: ROM VOR/DME RENAMED RMC

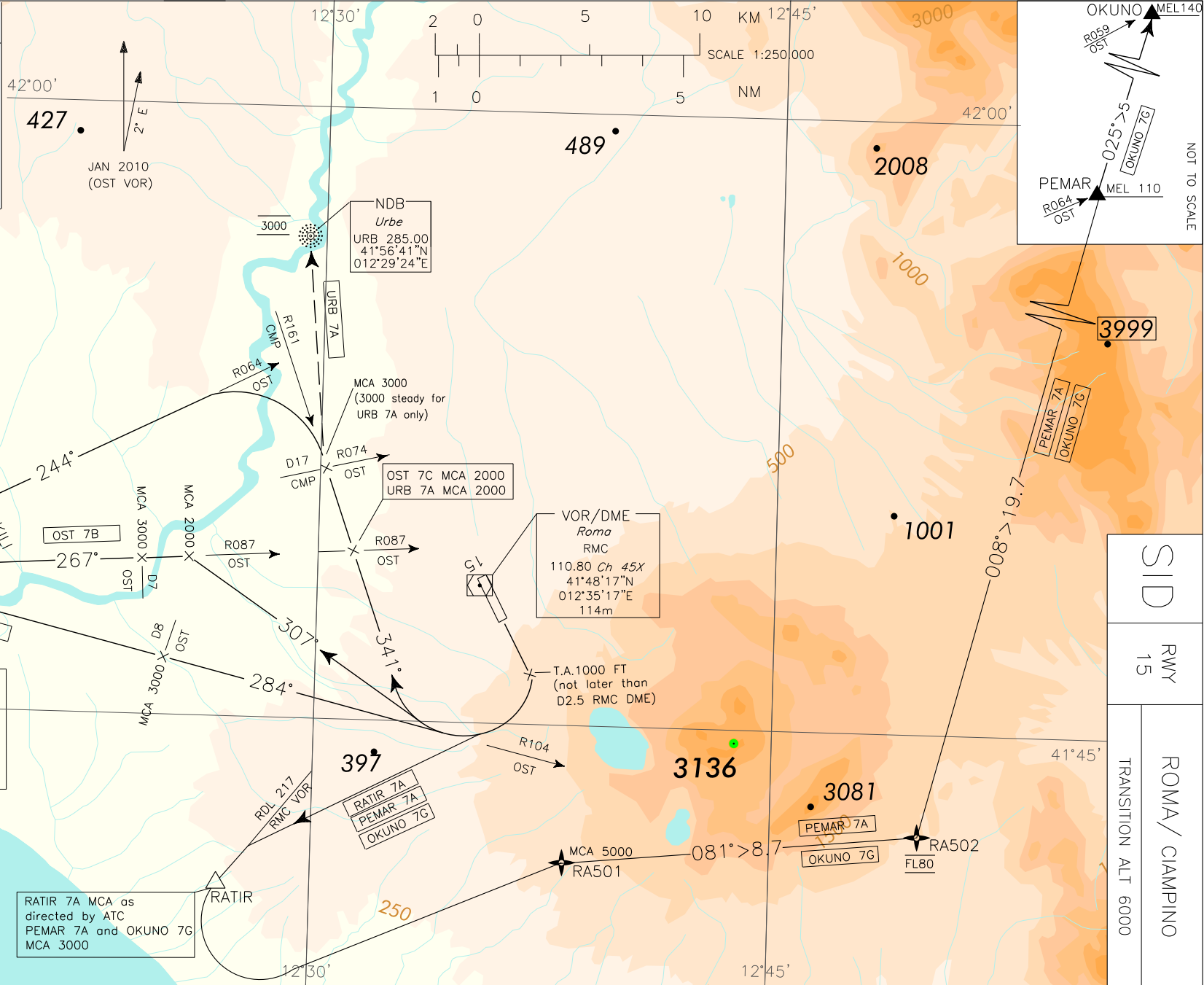
ENAV - Roma

AIRAC effective date 11 AUG 2022 (A7/22)

FREQUENCIES	
TWR Ciampino TWR	120.500 (119.400)
APP Roma Departures	130.900 134.200
Roma Director	131.250
ATIS Ciampino Arrival and Departure Information	122.425



LEGEND	
	SID ATC DISCRETION
	SID



SID	RWY 15	ROMA / CIAMPINO
TRANSITION ALT 6000		

AIP - Italia

NOT TO SCALE

AD 2 LIRA 6-1

RATIR 7A MCA as directed by ATC  
PEMAR 7A and OKUNO 7G  
MCA 3000

**INITIAL CLIMB PROCEDURES**

After take-off, crossing 1000 ft, turn right to join the assigned SID

**REMARKS**

1. Right turn after take-off shall be executed not later than 2.5 NM RMC DME.
2. Minimum Climb gradient: 7% (425 ft/NM) due to obstacles.
3. IAS MAX during turn 210 kt. Bank angle 25° or rate of turn 3°/s, whichever requires the lesser bank.

**OST 7A**

Initial climb procedure executed proceed on TR 284° to intercept and follow RDL104 OST VOR bound to OST VOR climbing to the assigned level.

MCA: RDL104/8NM OST VOR/DME: 3000FT; OST VOR: 5000FT

**OST 7B**

Initial climb procedure executed proceed on TR 307° to join RDL 087 OST VOR bound to OST VOR climbing to the assigned level.

MCA: Join RDL 087 OST VOR: 2000FT or al di sopra/or above; RDL087/7NM OST VOR/DME: 3000FT;  
OST VOR : 5000FT

**REMARK**

Pilots are requested to strictly adhere to the above procedure.

**OST 7C**

Initial climb procedure executed proceed on TR 341° (RDL161 CMP VOR); at 17 NM CMP DME (RDL 074 OST VOR) turn left to join RDL 064 OST VOR bound to OST VOR climbing to the assigned level.

MCA: INT RDL161 CMP VOR/RDL 087 OST VOR: 2000FT; INT RDL 161/17 NM CMP VOR DME / RDL 074 OST VOR: 3000 FT; AKILI 4000 FT; OST VOR: 5000FT

**PEMAR 7A**

Initial climb procedure executed intercept and follow RDL 217 RMC VOR bound to RATIR, then RA501 – RA502 – PEMAR.

MCA/MCL: RATIR, 3000FT, RA501, 5000FT, RA502, FL80 Steady, PEMAR FL110

Path Terminator	Waypoint Name	Fly Over	Track °Mag	Turn Direction	MEL/MEA	Speed Limit (IAS)	Recommended Navaid	Bearing/Range to Navaid	Navigation Performance
CF	RATIR	Y	217°	-	3000	240	RMC VOR/DME	217/9.7	B-RNAV-P- RNAV
DF	RA501	-	-	L	5000	-	-	-	B-RNAV-P- RNAV
TF	RA502	-	081°	-	FL80 STEADY	-	-	-	B-RNAV-P- RNAV
TF	PEMAR	-	008°	-	FL110	-	-	-	B-RNAV-P- RNAV

**OKUNO 7G**

Initial climb procedure executed intercept and follow RDL 217 RMC VOR bound to RATIR then RA501 – RA502 – PEMAR – OKUNO.

MCA/MCL: RATIR, 3000 FT; RA501, 5000FT, RA502, FL80 Steady, PEMAR FL110; OKUNO FL 140

Path Terminator	Waypoint Name	Fly Over	Track °Mag	Turn Direction	MEL/MEA	Speed Limit (IAS)	Recommended Navaid	Bearing/Range to Navaid	Navigation Performance
CF	RATIR	Y	217°	-	3000	240	RMC VOR/DME	217/9.7	B-RNAV-P-RNAV
DF	RA501	-	-	L	5000	-	-	-	B-RNAV-P-RNAV
TF	RA502	-	081°	-	FL80 STEADY	-	-	-	B-RNAV-P-RNAV
TF	PEMAR	-	008°	-	FL110	-	-	-	B-RNAV-P-RNAV
TF	OKUNO	-	024°	-	FL140	-	-	-	B-RNAV-P-RNAV

**RATIR 7A**

Initial climb procedure executed intercept and follow RDL 217 RMC VOR bound to RATIR. Cross RATIR as cleared by ATC.

**URB 7A (ATC discretion)**

Initial climb procedure executed proceed on TR 341° (RDL 161 CMP VOR) at 17 NM CMP DME (RDL 074 OST VOR) turn right bound to URB NDB.

MCA: INT RDL161 CMP VOR/RDL087 OST VOR 2000FT, INT RDL 161/17 NM CMP VOR DME/RDL074 OST VOR 3000 FT steady, URB NDB 3000 FT steady

**REMARKS**

- Clearances via SID OST will be followed by a second coded SID, according to Roma/Fiumicino SID.
- Clearances via SID URB and RATIR shall be followed by detailed instructions.
- All turns shall be executed:
  - IAS not exceeding 210 kt;
  - bank angle 25° or rate of turn not less 3° per second, whichever requires the lesser bank.
- Pilots shall adopt a minimum climb gradient in accordance with ICAO - Annex 6 provisions for a safe obstacles overflying. Such climb gradient shall be maintained in any foreseeable circumstance.

Waypoints Table formatted according ARINC 424 standards

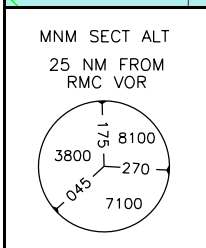
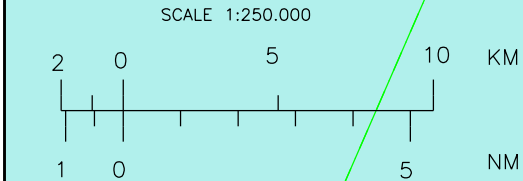
Waypoint	Latitude	Longitude
RA501	N41413800	E012381470
RA502	N41422812	E012495002



FREQUENCIES		
TWR	Ciampino TWR	120.500 (119.400)
APP	Roma Departure	130.900
	Roma Director	134.200
	Roma Director	131.250
ATIS	Ciampino Arrival and Departure Information	122.425

SID RWY 33	ROMA/ CIAMPINO
	TRANSITION ALT 6000

CHANGE: ROM VOR/DME RENAMED RMC



LEGEND	
SID	→

**SID DESCRIPTION****OST 8E**

After take-off turn left to intercept and follow RDL 330 RMC VOR/QDR 150° URB NDB (TR 330°) until 4 NM RMC DME (or 4NM ICIA DME), then turn left to join RDL 064 OST VOR (TR 244°) bound to OST VOR climbing to the assigned level.

MCA: RDL330 RMC VOR (OR QDR 150 DEG URB NDB)/4NM RMC DME (OR 4NM ICIA DME): 2000FT (1500FT FOR PISTONS ENGINE AIRCRAFT), RDL 064/012 NM OST VOR/DME (OR RDL 162/15 NM CMP VOR/DME): 3000FT, AKILI: 4000FT, OST VOR: 5000FT

**RATIR 8C**

After take-off turn left to intercept and follow RDL 330 RMC VOR/QDR 150° URB NDB (TR 330°) until 4 NM RMC DME (or 4NM ICIA DME), then turn left TR 185° (QDR 185° URB NDB) bound to RATIR.

MCA: RDL330 RMC VOR (OR QDR 150 DEG URB NDB)/4NM RMC DME (OR 4NM ICIA DME): 2000FT (1500FT FOR PISTONS ENGINE AIRCRAFT), QDR 185 DEG URB NDB: 3000FT STEADY, INT QDR 185 DEG URB NDB/RDL 097 OST VOR: 3000FT STEADY, RATIR AS CLEARED BY ATC

**URB 8C**

After take-off turn left to intercept and follow RDL 330 RMC VOR or QDR 150° URB NDB (TR 330°) to URB NDB.

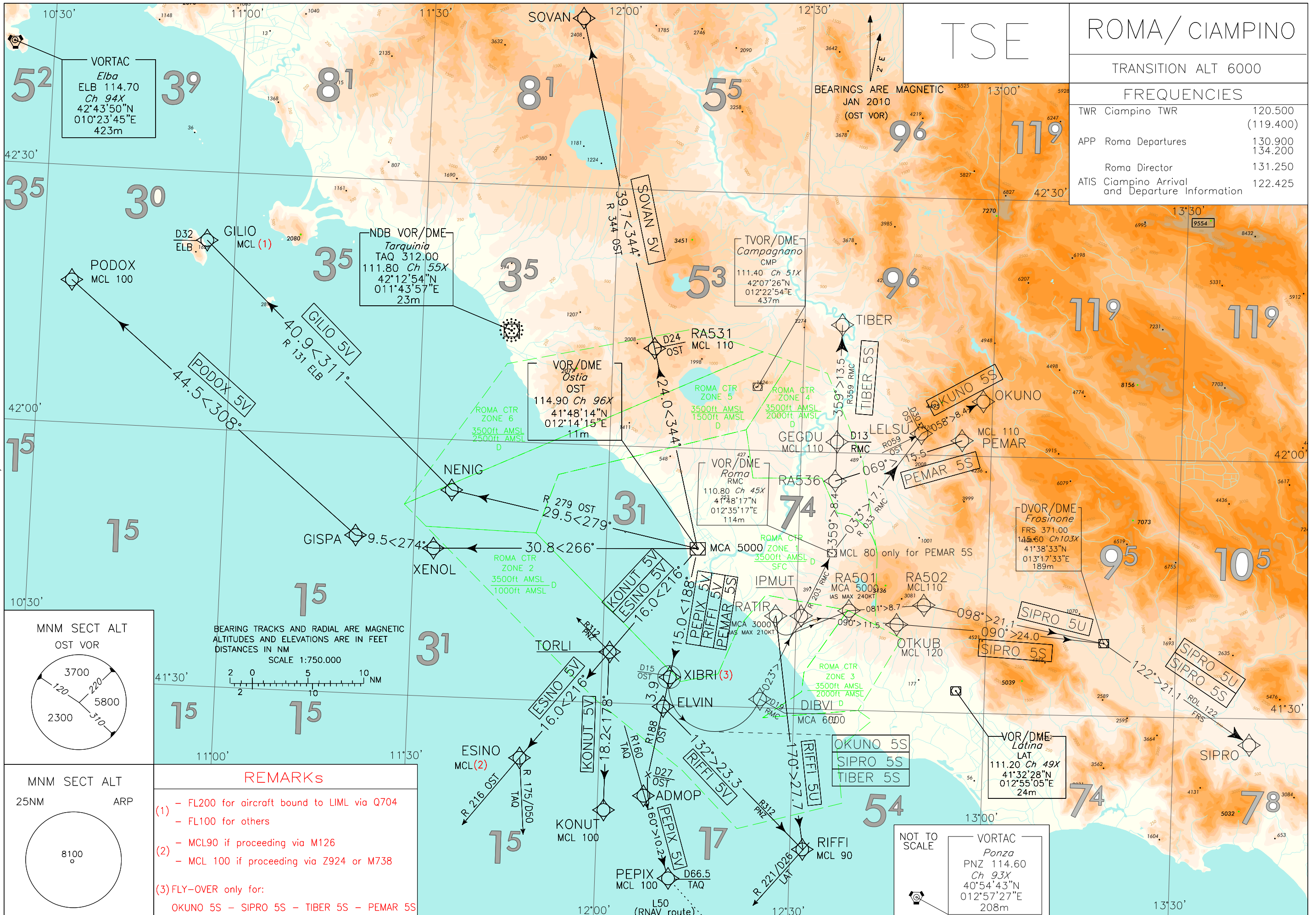
MCA: RDL330 RMC VOR (OR QDR 150 DEG URB NDB)/4NM RMC DME (OR 4NM ICIA DME): 2000FT (1500FT FOR PISTONS ENGINE AIRCRAFT), URB NDB 3000FT STEADY

**REMARKS**

1. Clearances via SID URB and RATIR will be followed by detailed instructions.
2. All turns shall be executed:
  - IAS not exceeding 210 kt;
  - bank angle 25° or rate of turn not less than 3° per second whichever requires the lesser bank.
3. Pilots shall adopt a minimum climb gradient in accordance with ICAO-Annex 6 provisions for a safe obstacles overflying. Such climb gradient shall be maintained in any foreseeable circumstance. Suggested minimum climb gradient of 300 ft/NM until leaving 2000 ft.

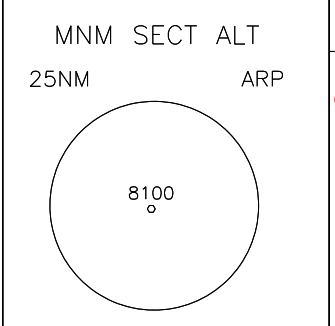
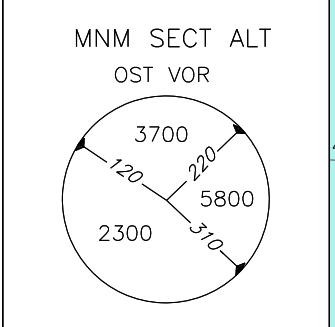
Intenzionalmente bianca

*Intentionally left blank*



<b>TSE</b>	
<b>ROMA/CIAMPINO</b>	
TRANSITION ALT 6000	
FREQUENCIES	
TWR Ciampino TWR	120.500 (119.400)
APP Roma Departures	130.900 134.200
Roma Director	131.250
ATIS Ciampino Arrival and Departure Information	122.425

CHANGE: ROM VOR/DME RENAMED RMC



BEARING TRACKS AND RADIAL ARE MAGNETIC  
ALTITUDES AND ELEVATIONS ARE IN FEET  
DISTANCES IN NM  
SCALE 1:750.000

- REMARKS**
- (1) - FL200 for aircraft bound to LIML via Q704
  - FL100 for others
  - (2) - MCL90 if proceeding via M126
  - MCL 100 if proceeding via Z924 or M738
  - (3) FLY-OVER only for:  
OKUNO 5S - SIPRO 5S - TIBER 5S - PEGAR 5S

NOT TO SCALE

VORTAC  
Ponza  
PNZ 114.60  
Ch 93X  
40°54'43"N  
012°57'27"E  
208m

**TSE DESCRIPTION****ESINO 5V**

Proceed on TR 216° (RDL 216 OST VOR) bound to ESINO (RDL 175/50NM TAQ VOR/DME).

MCA/MCL: OST VOR/DME 5000 FT; ESINO FL 90 (if proceeding via M126), FL 100 (if proceeding via Z924 or M738)

Path Terminator	Waypoint Identifier	Fly Over	Course °M(°T)	Magnetic Variation	Distance (NM)	Turn Direction	Altitude (ft)	Speed Limit (kt)	Navigation Specification
IF	OST	-	-	-	-	-	+5000	-	Conventional/ RNAV1
TF	TORLI	-	216° (217.5°)	-	16.0	-	-	-	Conventional/ RNAV1
TF	ESINO	-	216° (217.5°)	-	16.0	-	(*)	-	Conventional/ RNAV1

(\*) FL90 if proceeding via M126; FL100 if proceeding via Z924 or M738

**GILIO 5V**

Proceed on TR 279° (RDL279 OST VOR) bound to NENIG then turn right and proceed on TR 311° (RDL131 ELB VOR) bound to GILIO.

MCA/MCL: OST VOR/DME 5000FT; GILIO (\*)

Path Terminator	Waypoint Identifier	Fly Over	Course °M(°T)	Magnetic Variation	Distance (NM)	Turn Direction	Altitude (ft)	Speed Limit (kt)	Navigation Specification
IF	OST	-	-	-	-	-	+5000	-	Conventional/ RNAV1
TF	NENIG	-	279° (281.1°)	-	29.5	-	-	-	Conventional/ RNAV1
TF	GILIO	-	311° (313.0°)	-	40.9	-	(*)	-	Conventional/ RNAV1

(\*) FL200 for aircraft bound to LIML via Q704/ FL100 for others

**KONUT 5V**

Proceed on RDL 216 OST VOR bound to TORLI, then turn left on TR 178° bound to KONUT.

MCA/MCL: OST VOR/DME 5000 FT; KONUT FL 100

Path Terminator	Waypoint Identifier	Fly Over	Course °M(°T)	Magnetic Variation	Distance (NM)	Turn Direction	Altitude (ft)	Speed Limit (kt)	Navigation Specification
IF	OST	-	-	-	-	-	+5000	-	Conventional/ RNAV1
TF	TORLI	-	216° (217.5°)	-	16.0	-	-	-	Conventional/ RNAV1
TF	KONUT	-	178° (179.3°)	-	18.2	-	+FL100	-	Conventional/ RNAV1



**OKUNO 5S**

Proceed on TR 188° (RDL 188 OST VOR) bound to XIBRI then turn left until joining RDL 203 RMC VOR (TR 023°) bound to RMC VOR. Leave RMC VOR on RDL 033 (TR 033°) until joining RDL 059 OST VOR (TR 059°) bound to OKUNO.

MCA/MCL: OST VOR 5000 FT; DIBVI 6000 FT; LELSU FL 110

Path Terminator	Waypoint Identifier	Fly Over	Course °M(°T)	Magnetic Variation	Distance (NM)	Turn Direction	Altitude (ft)	Speed Limit (kt)	Navigation Specification
IF	OST	-	-	-	-	-	+5000	-	Conventional/ RNAV1
TF	XIBRI	Y	188° (190.5)	-	15.0	-	-	-	Conventional/ RNAV1
DF	DIBVI	-	-	-	-	L	+6000	-	Conventional/ RNAV1
TF	RMC	-	023° (024.9)	-	19.0	-	-	-	Conventional/ RNAV1
TF	LELSU	-	033° (035.0)	-	17.1	-	+FL110	-	Conventional/ RNAV1
TF	OKUNO	-	058° (060.6)	-	8.4	-	-	-	Conventional/ RNAV1

**PEPIX 5V**

Proceed on RDL 188 OST VOR via XIBRI – ELVIN (RDL 188/18.9NM OST VOR/DME) until 27 NM OST DME, then turn left until joining RDL 160 TAQ VOR bound to PEPIX.

MCA/MCL: OST VOR/DME 5000 FT; PEPIX FL 100

Path Terminator	Waypoint Identifier	Fly Over	Course °M(°T)	Magnetic Variation	Distance (NM)	Turn Direction	Altitude (ft)	Speed Limit (kt)	Navigation Specification
IF	OST	-	-	-	-	-	+5000	-	Conventional/ RNAV1
TF	XIBRI	-	188° (190.5°)	-	15.0	-	-	-	Conventional/ RNAV1
TF	ELVIN	-	188° (190.5°)	-	3.9	-	-	-	Conventional/ RNAV1
TF	ADMOP	-	188° (190.5)	-	10.5	-	-	-	Conventional/ RNAV1
TF	PEPIX	-	160° (162.2°)	-	10.2	-	+FL100	-	Conventional/ RNAV1

**PODOX 5V**

Path Terminator	Waypoint Identifier	Fly Over	Course °M(°T)	Magnetic Variation	Distance (NM)	Turn Direction	Altitude (ft)	Speed Limit (kt)	Navigation Specification
IF	OST	-	-	-	-	-	+5000	-	RNAV1
TF	XENOL	-	266° (268.1°)	-	30.8	-	-	-	RNAV1
TF	GISPA	-	274° (276.1°)	-	9.5	-	-	-	RNAV1
TF	PODOX	-	308° (309.3°)	-	44.5	-	+FL100	-	RNAV1

**RIFFI 5U**

Path Terminator	Waypoint Identifier	Fly Over	Course °M(°T)	Magnetic Variation	Distance (NM)	Turn Direction	Altitude (ft)	Speed Limit (kt)	Navigation Specification
IF	RATIR	-	-	-	-	-	+3000	-	RNAV1
TF	RIFFI	-	170° (172.2°)	-	27.7	-	+FL90	-	RNAV1

**RIFFI 5V**

Proceed on RDL 188 OST VOR via XIBRI (RDL 188/15NM OST VOR/DME) – ELVIN then turn left on TR 132° (RDL 312 PNZ VOR) bound to RIFFI.

MCA/MCL: OST VOR/DME 5000 FT; RIFFI FL 90

Path Terminator	Waypoint Identifier	Fly Over	Course °M(°T)	Magnetic Variation	Distance (NM)	Turn Direction	Altitude (ft)	Speed Limit (kt)	Navigation Specification
IF	OST	-	-	-	-	-	+5000	-	Conventional/ RNAV1
TF	XIBRI	-	188° (190.5°)	-	15.0	-	-	-	Conventional/ RNAV1
TF	ELVIN	-	188° (190.5°)	-	3.9	-	-	-	Conventional/ RNAV1
TF	RIFFI	-	132° (133.8°)	-	23.3	-	+FL90	-	Conventional/ RNAV1

**SIPRO 5S**

Path Terminator	Waypoint Identifier	Fly Over	Course °M(°T)	Magnetic Variation	Distance (NM)	Turn Direction	Altitude (ft)	Speed Limit (kt)	Navigation Specification
IF	OST	-	-	-	-	-	+5000	-	RNAV1
TF	XIBRI	Y	188° (190.5)	-	15.0	-	-	-	RNAV1
DF	DIBVI	-	-	-	-	L	+6000	-	RNAV1
TF	IPMUT	-	023° (024.9)	-	10.0	-	-	-	RNAV1
TF	OTKUB	-	090° (092.5)	-	11.5	-	+FL120	-	RNAV1
TF	FRS	-	090° (092.6)	-	24.0	-	-	-	RNAV1
TF	SIPRO	-	122° (123.8)	-	21.1	-	-	-	RNAV1

**SIPRO 5U**

Path Terminator	Waypoint Identifier	Fly Over	Course °M(°T)	Magnetic Variation	Distance (NM)	Turn Direction	Altitude (ft)	Speed Limit (kt)	Navigation Specification
IF	RATIR	-	-	-	-	-	+3000	-210	RNAV1
DF	RA501	-	-	-	-	-	+5000	-240	RNAV1
TF	RA502	-	081° (083.5)	-	8.7	-	+FL110	-	RNAV1
TF	FRS	-	098° (100.5)	-	21.1	-	-	-	RNAV1
TF	SIPRO	-	122° (123.8)	-	21.1	-	-	-	RNAV1

**SOVAN 5V**

Proceed on TR 344° (RDL344 OST VOR) bound to SOVAN

MCA/MCL: OST VOR/DME 5000FT; RA531 (RDL344/24NM OST VOR/DME) FL110

Path Terminator	Waypoint Identifier	Fly Over	Course °M(°T)	Magnetic Variation	Distance (NM)	Turn Direction	Altitude (ft)	Speed Limit (kt)	Navigation Specification
IF	OST	-	-	-	-	-	+5000	-	Conventional/ RNAV1
TF	RA531	-	344° (346.0°)	-	24.0	-	+FL110	-	Conventional/ RNAV1
TF	SOVAN	-	344° (346.0°)	-	39.7	-	-	-	Conventional/ RNAV1

**TIBER 5S**

Proceed on TR 188° (RDL 188 OST VOR) bound to XIBRI then turn left until joining RDL 203 RMC VOR (TR 023°) bound to RMC VOR. Leave RMC VOR on RDL 359 (TR 359°) bound to TIBER.

MCA/MCL: OST VOR 5000 FT; DIBVI 6000 FT; GEGDU FL110

Path Terminator	Waypoint Identifier	Fly Over	Course °M(°T)	Magnetic Variation	Distance (NM)	Turn Direction	Altitude (ft)	Speed Limit (kt)	Navigation Specification
IF	OST	-	-	-	-	-	+5000	-	Conventional/ RNAV1
TF	XIBRI	Y	188° (190.5)	-	15.0	-	-	-	Conventional/ RNAV1
DF	DIBVI	-	-	-	-	L	+6000	-	Conventional/ RNAV1
TF	RMC	-	023° (024.9)	-	19.0	-	-	-	Conventional/ RNAV1
TF	GEGDU	-	359° (001.0)	-	13.0	-	+FL110	-	Conventional/ RNAV1
TF	TIBER	-	359° (001.1)	-	13.5	-	-	-	Conventional/ RNAV1

**PEMAR 5S**

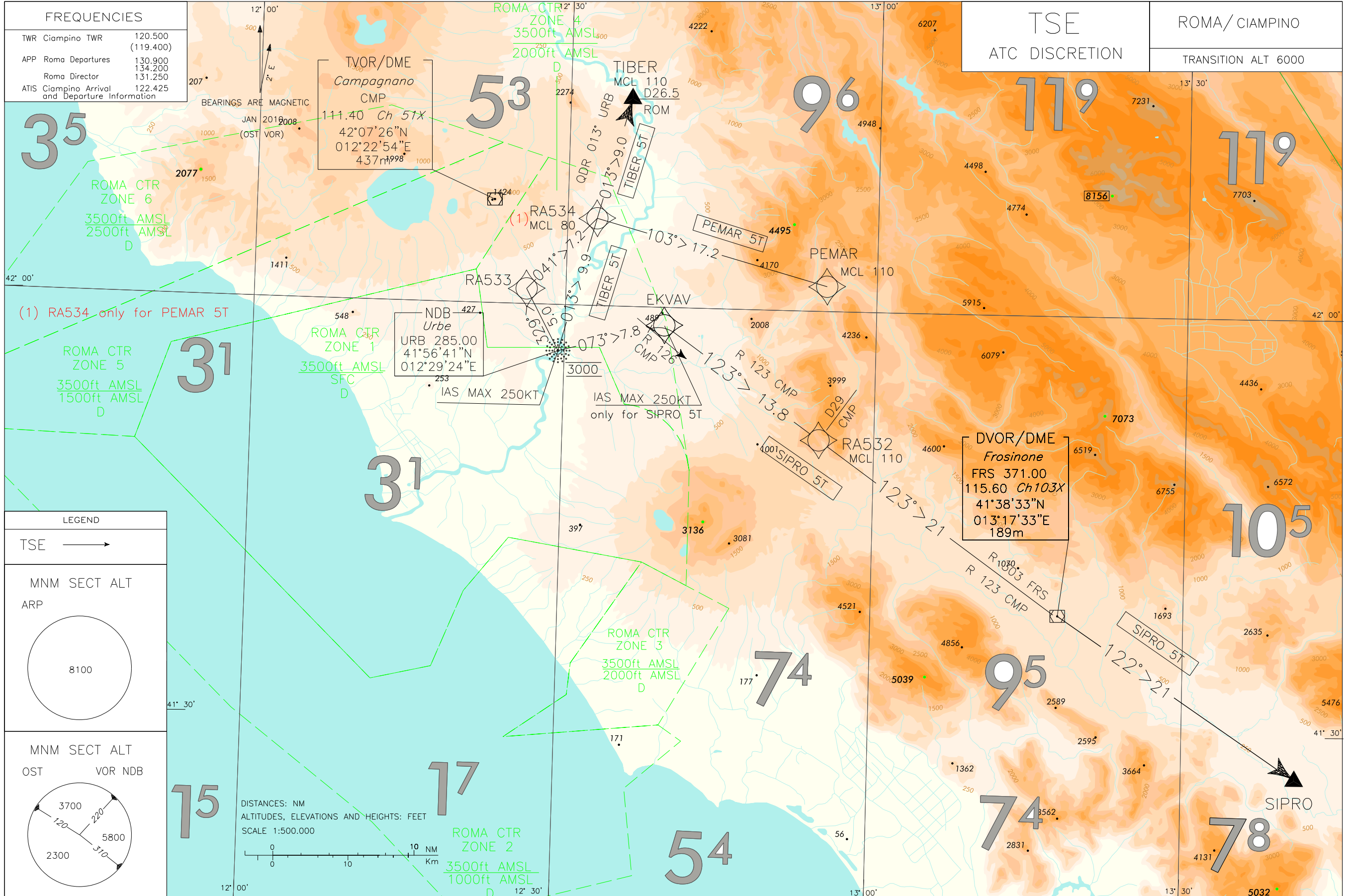
Path Terminator	Waypoint Identifier	Fly Over	Course °M(°T)	Magnetic Variation	Distance (NM)	Turn Direction	Altitude (ft)	Speed Limit (kt)	Navigation Specification
IF	OST	-	-	-	-	-	+5000	-	RNAV1
TF	XIBRI	Y	188° (190.5)	-	15.0	-	-	-	RNAV1
DF	DIBVI	-	-	-	-	L	+6000	-	RNAV1
TF	RMC	-	023° (024.9)	-	19.0	-	+FL80	-	RNAV1
TF	RA536	-	359° (001.0)	-	8.4	-	-	-	RNAV1
TF	PEMAR	-	069° (070.8)	-	15.5	-	+FL110	-	RNAV1

**WAYPOINT LIST**

<b>Waypoint Identifier</b>	<b>Coordinates</b>
RA501	41°41'38.0" N 012°38'14.7" E
RA502	41°42'28.1" N 012°49'50.0" E
RA531	42°11'31.3" N 012°06'33.1" E
RA536	41°56'41.7" N 012°35'28.3" E

Intenzionalmente bianca

*Intentionally left blank*



**TSE ATC DISCRETION DESCRIPTION****TIBER 5T**

Proceed on TR 013° (QDR 013° URB NDB) bound to TIBER.

MCA/MCL: URB NDB: 3000 FT steady; TIBER: FL110

Path Terminator	Waypoint Identifier	Fly Over	Course °M(°T)	Magnetic Variation	Distance (NM)	Turn Direction	Altitude (ft)	Speed Limit (kt)	Navigation Specification
IF	URB	-	-	-	-	-	@3000	- 250	Conventional/ RNAV1
TF	TIBER	-	013° (014.9)	-	18.9	-	+FL110	-	Conventional/ RNAV1

**SIPRO 5T**

Proceed on TR 073° (QDR 073° URB NDB). Crossing RDL126 CMP VOR turn right to join and follow RDL 123 CMP VOR (TR 123°) bound to FRS VOR. Leave FRS VOR on RDL 122 (TR 122°) bound to SIPRO.

MCL: URB NDB: 3000FT steady; RDL 123 /29NM CMP VOR/DME FL 110

Path Terminator	Waypoint Identifier	Fly Over	Course °M(°T)	Magnetic Variation	Distance (NM)	Turn Direction	Altitude (ft)	Speed Limit (kt)	Navigation Specification
IF	URB	-	-	-	-	-	@3000	- 250	Conventional/ RNAV1
TF	EKVAV	-	073° (075.0)	-	7.8	-	-	- 250	Conventional/ RNAV1
TF	RA532	-	123° (125.1)	-	13.8	-	+FL110	-	Conventional/ RNAV1
TF	FRS	-	123° (125.1)	-	21.0	-	-	-	Conventional/ RNAV1
TF	SIPRO	-	122° (123.8)	-	21.0	-	-	-	Conventional/ RNAV1

**PEMAR 5T**

Path Terminator	Waypoint Identifier	Fly Over	Course °M(°T)	Magnetic Variation	Distance (NM)	Turn Direction	Altitude (ft)	Speed Limit (kt)	Navigation Specification
IF	URB	-	-	-	-	-	@3000	- 250	RNAV1
TF	RA533	-	329° (331.6)	-	5.0	-	-	- 250	RNAV1
TF	RA534	-	041° (043.5)	-	7.2	-	+FL80	-250	RNAV1
TF	PEMAR	-	103° (104.9)	-	17.2	-	+FL110	-	RNAV1

**WAYPOINT LIST**

Waypoint Identifier	Coordinates
RA532	41°50'43.9" N 012°54'51.4" E
RA533	42°01'04.8" N 012°26'12.7" E
RA534	42°06'15.8" N 012°32'49.7" E

Intenzionalmente bianca

*Intentionally left blank*