

BIBEK Holding Pattern

CMP Holding Pattern

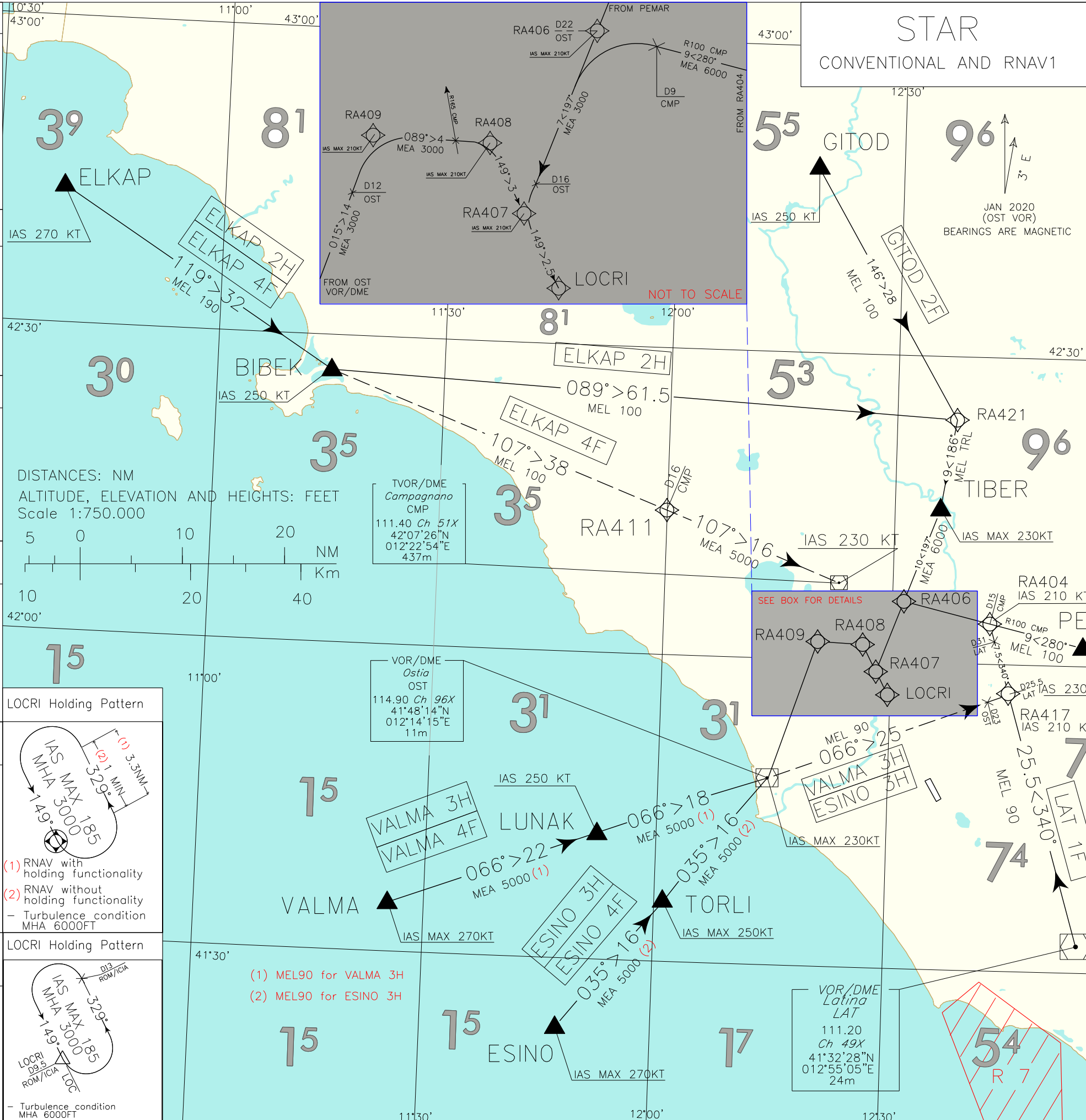
ESINO Holding Pattern

LAT Holding Pattern

LOCRI Holding Pattern

TIBER Holding Pattern

VALMA Holding Pattern



STAR CONVENTIONAL AND RNAV1

ROMA/CIAMPINO
 TRANSITION ALT 6000

REMARKS:
 For details on holding patterns see ENR 3.6

AIRSPACE CLASSIFICATION
 SEE AIP ENR 1.4

FREQUENCIES

APP Roma Arrivals	125.500 (127.950)
Roma Director	131.250
TWR Ciampino TWR	120.500 (119.400)
ATIS Ciampino Arrival and Departure Information	122.425

LEGEND

STAR —————→
 STAR ————→
 ATC Discretion - - - - -→

MNM SECT ALT OST VOR

MNM SECT ALT ARP

CHANGE: Revised chart

STAR Roma/Ciampino**ALAXI 1F**ALAXI – PEMAR – RA404 – RA406⁽¹⁾ – RA407⁽²⁾ – LOCRI.MEL/MEA: ALAXI – PEMAR: FL 110; PEMAR – RA404: FL 100; RA404⁽³⁾ – RA406: 6000FT; RA406⁽⁴⁾ – LOCRI: 3000 FT

Path Terminator	Waypoint Name	Fly Over	Track °Mag	Turn Direction	Altitude Constraint	Speed Limit (IAS)	Recommended Navaid	Bearing/Range to Navaid	Navigation Performance
IF	ALAXI	-	-	-	+FL110	250	-	-	Conventional/RNAV1
TF	PEMAR	-	309°	-	+FL110	230	-	-	Conventional/RNAV1
TF	RA404	-	280°	-	+FL100	-	-	-	Conventional/RNAV1
TF	RA406	-	280°	-	+6000FT	210	-	-	Conventional/RNAV1
TF	RA407	-	197°	-	+3000FT	210	-	-	Conventional/RNAV1
TF	LOCRI	-	149°	-	+3000FT	210	-	-	Conventional/RNAV1

(1) For conventional navigation performance the turn to RA407 shall start at RDL100/D9 CMP VOR/DME

(2) For conventional navigation performance the turn to LOCRI shall start at INT TR197°/D16 OST DME

(3) For conventional navigation performance, MEL 90 shall start at RDL100/D15 CMP VOR/DME

(4) For conventional navigation performance, MEA 3000FT shall start after turn to RA407, stabilized on TR197°

ELKAP 4F (ATC DISCRETION)

ELKAP – BIBEK – RA411 – CMP VOR/DME.

MEL/MEA: ELKAP – BIBEK: FL 190; BIBEK – RA411: FL 100; RA411⁽¹⁾– CMP VOR/DME: 5000 FT

Path Terminator	Waypoint Name	Fly Over	Track °Mag	Turn Direction	Altitude Constraint	Speed Limit (IAS)	Recommended Navaid	Bearing/Range to Navaid	Navigation Performance
IF	ELKAP		-	-	-	270	-	-	Conventional/RNAV1
TF	BIBEK		119°	-	+FL190	250	-	-	Conventional/RNAV1
TF	RA411		107°	-	+FL100	-	-	-	Conventional/RNAV1
TF	CMP		107°	-	+5000FT	230	-	-	Conventional/RNAV1

(1) For conventional navigation performance, MEA 5000FT shall start at RDL 287/D16 CMP VOR/DME to CMP VOR/DME

ELKAP 2H

Path Terminator	Waypoint Name	Fly Over	Track °Mag	Turn Direction	Altitude Constraint	Speed Limit (IAS)	Recommended Navaid	Bearing/Range to Navaid	Navigation Performance
IF	ELKAP	-	-	-	-	270	-	-	RNAV 1
TF	BIBEK	-	119°	-	+FL190	250	-	-	RNAV 1
TF	RA421	-	089°	R	+FL100	230	-	-	RNAV 1
TF	TIBER	-	186°	-	+TRL	230	-	-	RNAV 1
TF	RA406	-	197°	-	+6000FT	210	-	-	RNAV 1
TF	RA407	-	197°	-	+3000FT	210	-	-	RNAV 1
TF	LOCRI	-	149°	-	+3000FT	210	-	-	RNAV 1

ESINO 4FESINO – TORLI – OST VOR/DME – RA409⁽¹⁾ – RA408⁽²⁾ – RA407 – LOCRI.

MEA: ESINO – OST VORDME: 5000 FT; OST VOR/DME – LOCRI: 3000 FT

Path Terminator	Waypoint Name	Fly Over	Track °Mag	Turn Direction	Altitude Constraint	Speed Limit (IAS)	Recommended Navaid	Bearing/Range to Navaid	Navigation Performance
IF	ESINO	-	-	-	+5000FT	270	-	-	Conventional/RNAV 1
TF	TORLI	-	035°	-	+5000FT	250	-	-	Conventional/RNAV 1
TF	OST	-	035°	-	+5000FT	230	-	-	Conventional/RNAV 1
TF	RA409	-	015°	-	+3000FT	210	-	-	Conventional/RNAV 1
TF	RA408	-	089°	-	+3000FT	210	-	-	Conventional/RNAV 1
TF	RA407	-	149°	-	+3000FT	210	-	-	Conventional/RNAV 1
TF	LOCRI	-	149°	-	+3000FT	210	-	-	Conventional/RNAV 1

(1) For conventional navigation performance the turn to RA408 shall start at RDL015/D12 OST VOR/DME

(2) For conventional navigation performance the turn to RA407 shall start at INT TR089°/RDL165 CMP VOR

ESINO 3H (ATC DISCRETION)ESINO – TORLI – OST VOR/DME – RA417⁽¹⁾ – RA404⁽²⁾ – RA406⁽³⁾ – RA407⁽⁴⁾ – LOCRI.MEL/MEA: ESINO – RA404: FL90; RA404 – RA406: 6000FT; RA406⁽⁵⁾ – LOCRI: 3000 FT

Path Terminator	Waypoint Name	Fly Over	Track °Mag	Turn Direction	Altitude Constraint	Speed Limit (IAS)	Recommended Navaid	Bearing/Range to Navaid	Navigation Performance
IF	ESINO	-	-	-	+FL90	270	-	-	Conventional/RNAV 1
TF	TORLI	-	035°	-	+FL90	250	-	-	Conventional/RNAV 1
TF	OST	-	035°	-	+FL90	230	-	-	Conventional/RNAV 1
TF	RA417	-	066°	-	+FL90	210	-	-	Conventional/RNAV 1
TF	RA404	-	340°	-	+FL90	210	-	-	Conventional/RNAV 1
TF	RA406	-	280°	-	+6000FT	210	-	-	Conventional/RNAV 1
TF	RA407	-	197°	-	+3000FT	210	-	-	Conventional/RNAV 1
TF	LOCRI	-	149°	-	+3000FT	210	-	-	Conventional/RNAV 1

(1) For conventional navigation performance the turn to RA404 shall start at RDL066/D23 OST VOR/DME

(2) For conventional navigation performance the turn to RA406 shall start at RDL340/D31 LAT VOR/DME

(3) For conventional navigation performance the turn to RA407 shall start at RDL100/D9 CMP VOR/DME

(4) For conventional navigation performance the turn to LOCRI shall start at INT TR197°/D16 OST DME

(5) For conventional navigation performance, MEA 3000FT shall start after turn to RA407, stabilized on TR197°

GITOD 2FGITOD – RA421 - TIBER – RA406 – RA407⁽¹⁾ – LOCRI.MEL/MEA: GITOD – RA421: FL100; RA421 - TIBER: TRL; TIBER – RA406: 6000 FT; RA406⁽²⁾ – LOCRI: 3000 FT

Path Terminator	Waypoint Name	Fly Over	Track °Mag	Turn Direction	Altitude Constraint	Speed Limit (IAS)	Recommended Navaid	Bearing/Range to Navaid	Navigation Performance
IF	GITOD	-	-	-	-	250	-	-	Conventional/RNAV1
TF	RA421	-	146°	-	+FL100	-	-	-	Conventional/RNAV1
TF	TIBER	-	186°	-	+TRL	230	-	-	Conventional/RNAV1
TF	RA406	-	197°	-	+6000FT	210	-	-	Conventional/RNAV1
TF	RA407	-	197°	-	+3000FT	210	-	-	Conventional/RNAV1
TF	LOCRI	-	149°	-	+3000FT	210	-	-	Conventional/RNAV1

(1) For conventional navigation performance the turn to LOCRI shall start at INT TR197°/D16 OST DME

(2) For conventional navigation performance, MEA 3000FT shall start at INT TR197°/D22 OST DME (or INT TR197°/RDL100 CMP VOR)

LAT 1FLAT VOR/DME – RA404⁽¹⁾ – RA406⁽²⁾ – RA407⁽³⁾ – LOCRI.MEL/MEA: LAT VOR/DME – RA404: FL 90; RA404 - RA406⁽⁴⁾:6000 FT; RA406⁽⁴⁾– LOCRI: 3000 FT

Path Terminator	Waypoint Name	Fly Over	Track °Mag	Turn Direction	Altitude Constraint	Speed Limit (IAS)	Recommended Navaid	Bearing/Range to Navaid	Navigation Performance
IF	LAT	-	-	-	+FL90	250	-	-	Conventional/RNAV1
TF	RA404	-	340°	-	+FL90	210	-	-	Conventional/RNAV1
TF	RA406	-	280°	-	+6000FT	210	-	-	Conventional/RNAV1
TF	RA407	-	197°	-	+3000FT	210	-	-	Conventional/RNAV1
TF	LOCRI	-	149°	-	+3000FT	210	-	-	Conventional/RNAV1

(1) For conventional navigation performance the turn to RA406 shall start at RDL340/D31 LAT VOR/DME

(2) For conventional navigation performance the turn to RA407 shall start at RDL100/D09 CMP VOR/DME

(3) For conventional navigation performance the turn to LOCRI shall start at INT TR197°/D16 OST DME

(4) For conventional navigation performance, MEA 3000FT shall start after turn to RA407, stabilized on TR197°

MOPUV 1FMOPUV – DESUK – PEMAR – RA404 – RA406⁽¹⁾ – RA407⁽²⁾ – LOCRI.MEL/MEA: MOPUV – DESUK: FL 120; DESUK – RA404: FL 100; RA404⁽³⁾ – RA406: 6000FT; RA406⁽⁴⁾ – LOCRI: 3000 FT

Path Terminator	Waypoint Name	Fly Over	Track °Mag	Turn Direction	Altitude Constraint	Speed Limit (IAS)	Recommended Navaid	Bearing/Range to Navaid	Navigation Performance
IF	MOPUV	-	-	-	+FL120	250	-	-	Conventional/RNAV 1
TF	DESUK	-	236°	-	+FL120	230	-	-	Conventional/RNAV 1
TF	PEMAR	-	279°	-	+FL100	-	-	-	Conventional/RNAV 1
TF	RA404	-	280°	-	+FL100	-	-	-	Conventional/RNAV 1
TF	RA406	-	280°	-	+6000FT	210	-	-	Conventional/RNAV 1
TF	RA407	-	197°	-	+3000FT	210	-	-	Conventional/RNAV 1
TF	LOCRI	-	149°	-	+3000FT	210	-	-	Conventional/RNAV 1

(1) For conventional navigation performance the turn to RA407 shall start at RDL100/D9 CMP VOR/DME

(2) For conventional navigation performance the turn to LOCRI shall start at INT TR197°/D16 OST DME

(3) For conventional navigation performance, MEL 90 shall start at RDL100/D15 CMP VOR/DME

(4) For conventional navigation performance, MEA 3000FT shall start after turn to RA407, stabilized on TR197°

VALMA 4FVALMA – LUNAK – OST VOR/DME – RA409⁽¹⁾ – RA408⁽²⁾ – RA407 – LOCRI.

MEA: VALMA – OST VOR/DME: 5000 FT; OST VOR/DME – LOCRI: 3000 FT

Path Terminator	Waypoint Name	Fly Over	Track °Mag	Turn Direction	Altitude Constraint	Speed Limit (IAS)	Recommended Navaid	Bearing/Range to Navaid	Navigation Performance
IF	VALMA	-	-	-	+5000FT	270	-	-	Conventional/RNAV 1
TF	LUNAK	-	066°	-	+5000FT	250	-	-	Conventional/RNAV 1
TF	OST	-	066°	-	+5000FT	230	-	-	Conventional/RNAV 1
TF	RA409	-	015°	-	+3000FT	210	-	-	Conventional/RNAV 1
TF	RA408	-	089°	-	+3000FT	210	-	-	Conventional/RNAV 1
TF	RA407	-	149°	-	+3000FT	210	-	-	Conventional/RNAV 1
TF	LOCRI	-	149°	-	+3000FT	210	-	-	Conventional/RNAV 1

(1) For conventional navigation performance the turn to RA408 shall start at RDL015/D12 OST VOR/DME

(2) For conventional navigation performance the turn to RA407 shall start at INT TR089°/RDL165 CMP VOR

VALMA 3H (ATC DISCRETION)

VALMA – LUNAK – OST VOR/DME – RA417⁽¹⁾ – RA404⁽²⁾ – RA406⁽³⁾ – RA407⁽⁴⁾ – LOCRI
 MEL/MEA: VALMA – RA404:FL90; RA404 – RA406: 6000FT; RA406⁽⁵⁾– LOCRI: 3000 FT

Path Terminator	Waypoint Name	Fly Over	Track °Mag	Turn Direction	Altitude Constraint	Speed Limit (IAS)	Recommended Navaid	Bearing/ Range to Navaid	Navigation Performance
IF	VALMA	-	-	-	+FL90	270	-	-	Conventional/RNAV1
TF	LUNAK	-	066°	-	+FL90	250	-	-	Conventional/RNAV1
TF	OST	-	066°	-	+FL90	230	-	-	Conventional/RNAV1
TF	RA417	-	066°	-	+FL90	210	-	-	Conventional/RNAV1
TF	RA404	-	340°	-	+FL90	210	-	-	Conventional/RNAV1
TF	RA406	-	280°	-	+6000FT	210	-	-	Conventional/RNAV1
TF	RA407	-	197°	-	+3000FT	210	-	-	Conventional/RNAV1
TF	LOCRI	-	149°	-	+3000FT	210	-	-	Conventional/RNAV1

- (1) For conventional navigation performance the turn to RA404 shall start at RDL066/D23 OST VOR/DME
 (2) For conventional navigation performance the turn to RA406 shall start at RDL340/D31 LAT VOR/DME
 (3) For conventional navigation performance the turn to RA407 shall start at RDL100/D9 CMP VOR/DME
 (4) For conventional navigation performance the turn to LOCRI shall start at INT TR197°/D16 OST DME
 (5) For conventional navigation performance, MEA 3000FT shall start after turn to RA407, stabilized on TR197°

HOLDING RNAV 1 (for RNAV approach only)

Path Terminator	Waypoint Name	Inbound Track	Leg distance	Turn Direction	Altitude Constraint	Speed Limit	Magnetic Variation	Navigation Specification	Waypoint Distance (only for RNAV systems without RNAV functionality)
HF	LOCRI	149°	3.3	L	3000 (1)	185	3	RNAV 1	4

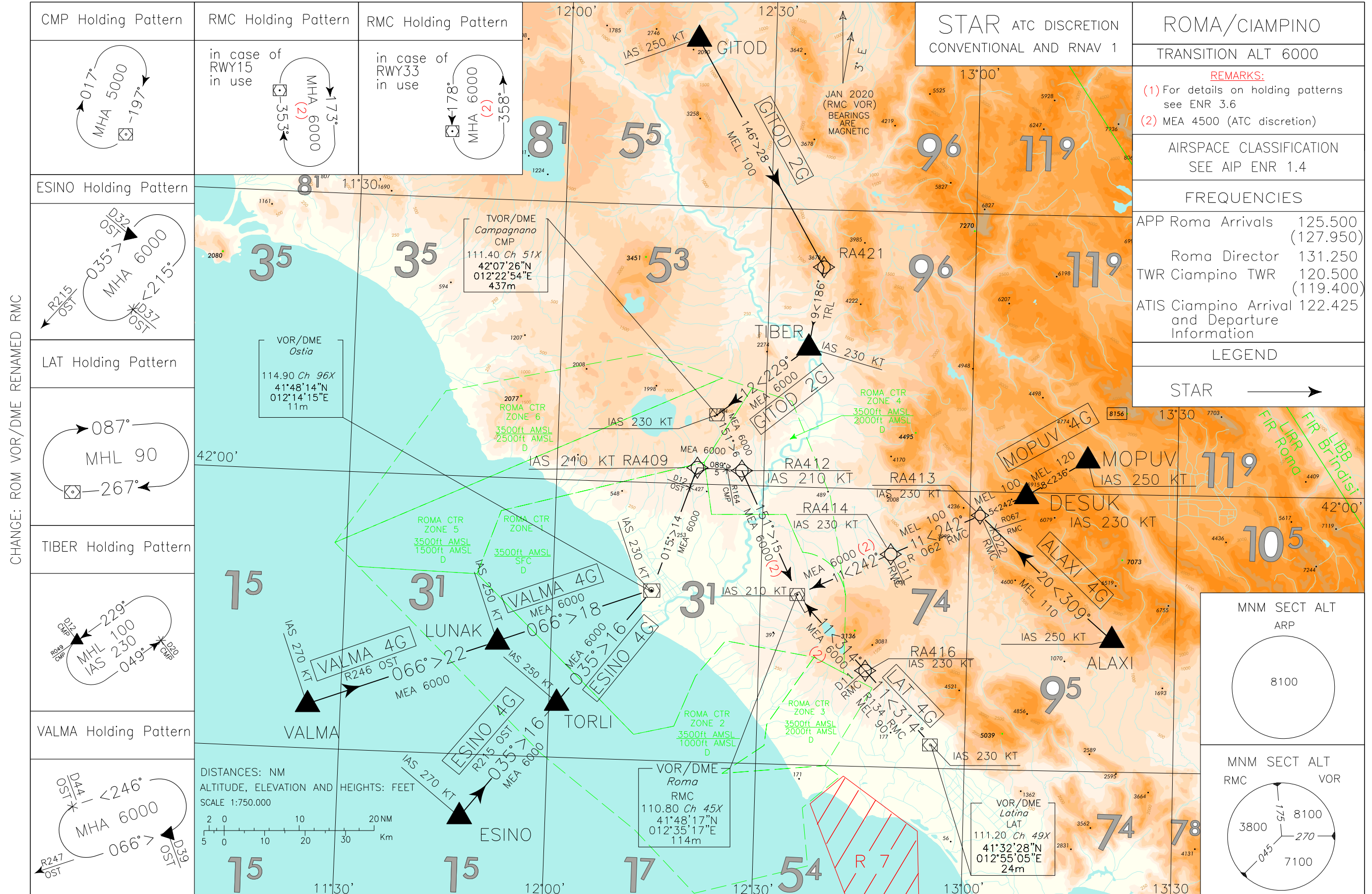
(1) MHA 6000 FT FOR TURBULENCE CONDITION

Waypoints Table formatted according ARINC 424 standards

Waypoint	Latitude	Longitude
RA404	N42035829	E012424575
RA406	N42055629	E012312928
RA407	N41585925	E012280372
RA408	N42013622	E012261455
RA409	N42014569	E012201971
RA411	N42130911	E012024781
RA417	N41570281	E012452940
RA421	N42234884	E012375260

Intenzionalmente bianca

Intentionally left blank



CHANGE: ROM VOR/DME RENAMED RMC

STAR ATC DISCRETION
CONVENTIONAL AND RNAV 1

ROMA/CIAMPINO	
TRANSITION ALT 6000	
REMARKS: (1) For details on holding patterns see ENR 3.6 (2) MEA 4500 (ATC discretion)	
AIRSPACE CLASSIFICATION SEE AIP ENR 1.4	
FREQUENCIES	
APP Roma Arrivals	125.500 (127.950)
Roma Director	131.250
TWR Ciampino TWR	120.500 (119.400)
ATIS Ciampino Arrival and Departure Information	122.425
LEGEND	
STAR	→

STAR Roma/Ciampino (ATC discretion)ALAXI – RA413⁽¹⁾ – RA414 – RMC VOR/DME.MEL/MEA: ALAXI – RA413: FL 110; RA413⁽²⁾ – RA414: FL 100; RA414⁽³⁾ – RMC VOR/DME: 6000FT⁽⁴⁾

Path Terminator	Waypoint Name	Track °Mag	Turn Direction	MEL/MEA	Speed Limit	Recommended Navaid	Bearing/Range to Navaid	Navigation Performance
IF	ALAXI	-	-	-	250	-	-	Conventional/RNAV 1 (overlay)
TF	RA413	309°	-	FL110	230	-	-	Conventional/RNAV 1 (overlay)
TF	RA414	242°	-	FL100	-	-	-	Conventional/RNAV 1 (overlay)
TF	RMC	242°	-	6000ft (4)	210	-	-	Conventional/RNAV 1 (overlay)

(1) For conventional navigation performance, the turn to RA414 shall start at INT TR309°/RDL 067 RMC VOR

(2) For conventional navigation performance, MEL100 shall start at RDL 062/D22 RMC VOR/DME

(3) For conventional navigation performance, MEA 6000FT (4500ft ATC Discretion) shall start at RDL 062/D11 RMC VORDME

(4) 4500 FT ATC discretion

ESINO 4GESINO – TORLI – OST VOR/DME – RA409⁽¹⁾ – RA412⁽²⁾ – RMC VOR/DME.MEA: ESINO – RMC VOR/DME: 6000FT⁽³⁾

Path Terminator	Waypoint Name	Track °Mag	Turn Direction	MEL/MEA	Speed Limit	Recommended Navaid	Bearing/Range to Navaid	Navigation Performance
IF	ESINO	-	-	-	270	-	-	Conventional/RNAV 1 (overlay)
TF	TORLI	035°	-	6000ft	250	-	-	Conventional/RNAV 1 (overlay)
TF	OST	035°	-	6000ft	230	-	-	Conventional/RNAV 1 (overlay)
TF	RA409	015°	-	6000ft	210	-	-	Conventional/RNAV 1 (overlay)
TF	RA412	089°	-	6000ft	210	-	-	Conventional/RNAV 1 (overlay)
TF	RMC	151°	-	6000ft (3)	-	-	-	Conventional/RNAV 1 (overlay)

(1) For conventional navigation performance, the turn to RA412 shall start at RDL015/D12 OST VOR/DME

(2) For conventional navigation performance, the turn to RMC VOR/DME shall start at INT TR089°/RDL165 CMP VOR

(3) RA412 – RMC VOR/DME: 4500FT ATC discretion

GITOD 2G

GITOD – RA421 – TIBER – CMP VOR/DME – RA412 – RMC VOR/DME.

MEL/MEA: GITOD – RA421: FL 100; RA421 – TIBER: TRL; TIBER – RMC VOR/DME: 6000FT⁽¹⁾

Path Terminator	Waypoint Name	Track °Mag	Turn Direction	MEL/MEA	Speed Limit	Recommended Navaid	Bearing/Range to Navaid	Navigation Performance
IF	GITOD	-	-	-	250	-	-	Conventional/RNAV 1 (overlay)
TF	RA421	146°	-	FL100	-	-	-	Conventional/RNAV 1 (overlay)
TF	TIBER	186°	-	TRL	230	-	-	Conventional/RNAV 1 (overlay)
TF	CMP	229°	-	6000ft	230	-	-	Conventional/RNAV 1 (overlay)
TF	RA412	151°	-	6000ft	210	-	-	Conventional/RNAV 1 (overlay)
TF	RMC	151°	-	6000ft (1)	-	-	-	Conventional/RNAV 1 (overlay)

(1) 4500FT ATC discretion

LAT 4G

LAT VOR/DME – RA416 – RMC VOR/DME.

MEL/MEA: LAT VOR/DME – RA416: FL90; RA416⁽¹⁾ – RMC VOR/DME: 6000 FT⁽²⁾

Path Terminator	Waypoint Name	Track °Mag	Turn Direction	MEL/MEA	Speed Limit	Recommended Navaid	Bearing/Range to Navaid	Navigation Performance
IF	LAT	-	-	-	230	-	-	Conventional/RNAV 1 (overlay)
TF	RA416	314°	-	FL90	-	-	-	Conventional/RNAV 1 (overlay)
TF	RMC	314°	-	6000ft (2)	210	-	-	Conventional/RNAV 1 (overlay)

(1) For conventional navigation performance, MEA 6000FT shall start at RDL 134/D11 RMC VORDME

(2) 4500FT ATC discretion

MOPUV 4G

MOPUV – DESUK – RA413 – RA414 – RMC VOR/DME

MEL/MEA: MOPUV – DESUK: FL 120; DESUK – RA414: FL 100; RA414⁽¹⁾ – RMC VOR/DME: 6000FT⁽²⁾

Path Terminator	Waypoint Name	Track °Mag	Turn Direction	MEL/MEA	Speed Limit	Recommended Navaid	Bearing/Range to Navaid	Navigation Performance
IF	MOPUV	-	-	-	250	-	-	Conventional/RNAV 1 (overlay)
TF	DESUK	236°	-	FL120	230	-	-	Conventional/RNAV 1 (overlay)
TF	RA413	242°	-	FL100	-	-	-	Conventional/RNAV 1 (overlay)
TF	RA414	242°	-	FL100	-	-	-	Conventional/RNAV 1 (overlay)
TF	RMC	242°	-	6000ft (2)	210	-	-	Conventional/RNAV 1 (overlay)

(1) For conventional navigation performance, MEA 6000FT (4500FT ATC Discretion) shall start at RDL 062/D11 RMC VOR/DME

(2) RA414 – RMC VOR/DME: 4500FT ATC discretion

VALMA 4GVALMA – LUNAK – OST VOR/DME – RA409⁽¹⁾ – RA412⁽²⁾ – RMC VOR/DME.MEA: VALMA – RMC VOR/DME: 6000FT⁽³⁾

Path Terminator	Waypoint Name	Track °Mag	Turn Direction	MEL/MEA	Speed Limit	Recommended Navaid	Bearing/Range to Navaid	Navigation Performance
IF	VALMA	-	-	-	270	-	-	Conventional/RNAV 1 (overlay)
TF	LUNAK	066°	-	6000ft	250	-	-	Conventional/RNAV 1 (overlay)
TF	OST	066°	-	6000ft	230	-	-	Conventional/RNAV 1 (overlay)
TF	RA409	015°	-	6000ft	210	-	-	Conventional/RNAV 1 (overlay)
TF	RA412	089°	-	6000ft	210	-	-	Conventional/RNAV 1 (overlay)
TF	RMC	151°	-	6000ft (3)	210	-	-	Conventional/RNAV 1 (overlay)

(1) For conventional navigation performance, the turn to RA412 shall start at RDL015/D12 OST VOR/DME

(2) For conventional navigation performance, the turn to RMC VOR/DME shall start at INT TR089°/RDL164 CMP VOR

(3) 4500FT ATC discretion

Waypoints Table formatted according ARINC 424 standards

Waypoint	Latitude	Longitude
RA409	N42014569	E012201971
RA412	N42013551	E012264071
RA413	N41572473	E013013292
RA414	N41525279	E012482816
RA416	N41401983	E012451551
RA421	N42234884	E012375260

Intenzionalmente bianca

Intentionally left blank